

801-6101

Standard Spacer - Sirius i30

DESCRIPTION

The standard Spacer for the Sirius i30 is often used on door posts where cable entry from the rear is not possible, or where additional space must be created from a metal door post. The Spacer is equipped with a made-to-measure profile which always enables a precise installation of the card reader.

FEATURES

Installation on metal surfaces

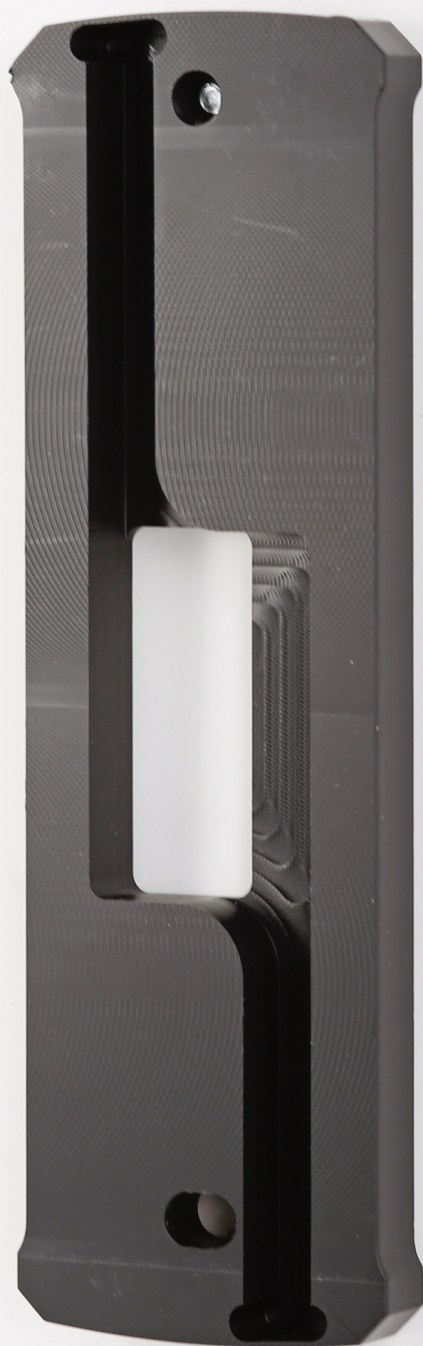
Temperature -40 °C to +90 °C

Easy to install









RELATED

**Sirius**Standard Spacer - Sirius i30
