

CM27

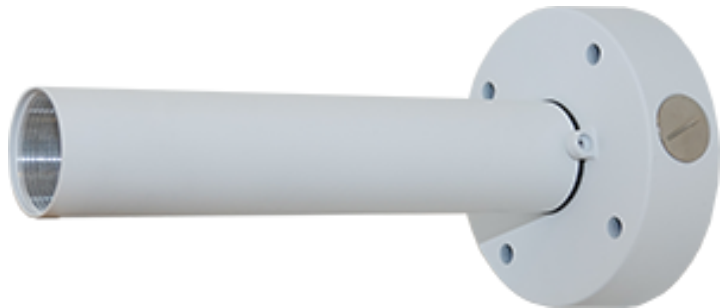
Ceiling mount 25cm for PD9x0

DESCRIPTION

The CM27 is a ceiling mount for the PD9x0 cameras, or any camera that supports connection via NPT 1.5" threaded mounting.

FEATURES

Aluminium

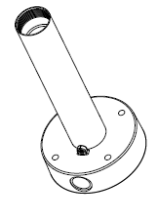
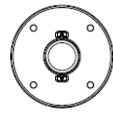


Mechanical

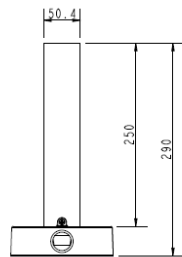
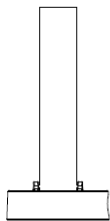
Materials	Aluminium (ADC10)
Finishing	Baking paint
Dimensions (L x W x H)	290 x 140 x 140 mm
Color	White
Max. Load	10 kg
Weight	1.5 kg

Ordering Information

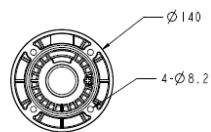
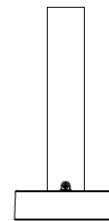
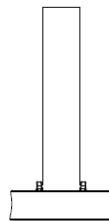
CM27	Ceiling mount 25cm for PD9x0
CM27A	Extension 25cm for CM27



SCALE 0.200



SCALE 0.200



RELATED



TKH Security CM27A
Extension 25cm for CM27



TKH Security TA27
Tube adapter/pendant mount for FD810, FD820v2, FD910, FD950, FD980, FD360



Siquira PD900 (EOL)
3 MP High-speed PTZ dome camera 30x zoom



Siquira PD910 (EOL)
3 MP high-speed PTZ camera with 40x zoom, IR



TKH Security PD950
5MP intelligent IP outdoor PTZ camera 40x zoom, IR, Wiper



TKH Security PD980
8 MP high-speed PTZ camera with 31x zoom, IR, Wiper



TKH Security PD950DC
5 MP High-speed outdoor PTZ dome camera 40x zoom



TKH Security PD950NW
5MP intelligent IP outdoor PTZ camera 40x zoom, IR