

# EX-FIX T SERIES

## EX Fixed Thermal Camera 316L

### DESCRIPTION

The EX-FIX T camera housing is a rugged corrosion proof thermal camera housing designed for use in hazardous areas in onshore, offshore, marine and heavy industrial environments. The housing is not sold separately, it is only available in combination with a Siqura TC-336 and TC-640 thermal module and an interface (INT-RJ/SM/MM).

### FEATURES

Corrosion protected 316L stainless-steel

ATEX and IECEx certified for gas and dust

Grid protected germanium window (diameter 50 mm)

Suited for 9, 13, 19, 25, 35, 50 mm thermal lenses

IP66 / IP67

Integrated power supply (24, 115 or 230 Vac)

Integrated heater

Electro-polished 316L sun-shield

Optional direct to fiber

Low maintenance



## Description

### Corrosion free 316L construction

The EX-FIX T housing is designed for thermal imaging in hazardous areas in onshore, offshore, marine and heavy industrial environments. 100% of the camera housing is made of corrosion proof 316L steel, protected against salty and sulfur rich environments. The hard carbon coated germanium window is additionally protected by a 316L grid.

### ATEX and IECEx certified

The EX-FIX T is fully ATEX and IECEx certified for hazardous areas zone 1 and 2 for gas and zone 21 and 22 for dust. Within the certification the camera housing shall be equipped by a TC-336 or TC-640 thermal module and a 5 or 10 m multicable cable tail as defined by INT-RJ, INT-SM, or INT-MM. INT-RJ for CAT5e connections and INT-SM or INT-MM for direct to fiber.

### Mechanical

Certification	ATEX; IECEx
Rating	Ex db op pr IIC T6 Gb -40°C Tamb +60°C
	Ex tb III C T85°C Db -40°C Tamb +60°C
	Ex db op pr IIB T5 Gb -40°C Tamb +75°C
	Ex tb IIIC T100°C Db -40°C Tamb +75°C
Ingress protection rating	IP66 / IP67
Body material	Electro-polished 316L stainless steel
Window	AR/DLC germanium window
- Size	diameter 50 mm; with protective grid
Sunshield	Standard
Operating temperature (Tamb)	-40 °C to +75 °C (-40 °F to +167 °F)
Relative humidity	5% to 100%
Cable entry	2x M25x1.5
Weight	12 kg

### Electrical

Power rating	EX-FIX24T	EX-FIX115T	EX-FIX230T
	24 Vac +/-10%	115 Vac +/-10%	230 Vac +/-10%
	50/60Hz	50/60Hz	50/60Hz
Max power consumption	25 W	25 W	25 W
Internal Heater	Standard		
- Heater control	On:12°C +/- 4°C; Off: 20°C +/- 3°C		

### Ordering information

EX-FIX24T	EX Fixed Thermal Camera 316L 24VAC
EX-FIX115T	EX Fixed Thermal Camera 316L 115VAC
EX-FIX230T	EX Fixed Thermal Camera 316L 230VAC

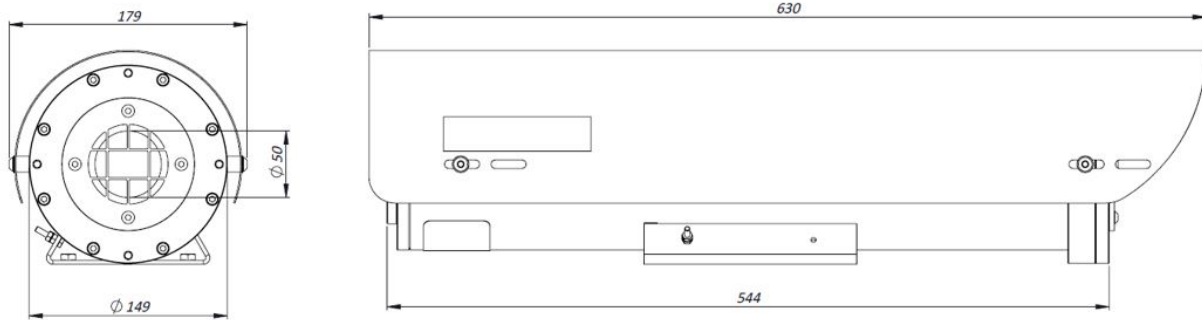
### Maintenance kits

EX-MK F	Maintenance kit EX Fixed camera: O-Ring, screws, desiccant bags
---------	---

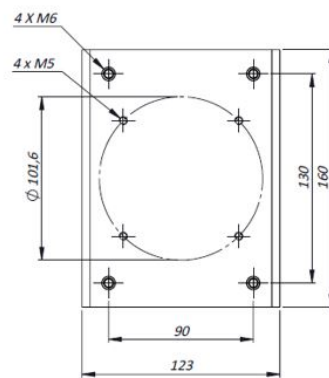
Housing	Optical camera		Thermal camera			Interface			
	BC822v2H3-SA	TC(R1)-336	TC(R1)-640	INT-RJ	INT-RJ5 INT-RJ10	INT-SM	INT-SM5 INT-SM10	INT-MM	INT-MM5 INT-MM10
EX-FIX24	✓			✓	✓	✓	✓	✓	✓
EX-FIX24W	✓			✓	✓	✓	✓	✓	✓
EX-FIX24T		✓	✓	✓	✓	✓	✓	✓	✓
EX-PTZ24	✓			✓	✓	✓	✓	✓	✓
EX-PTZ24T		✓	✓	✓	✓	✓	✓	✓	✓
EX-PTZ24D	✓	✓	✓	✓	✓				

*This charts also applies to the EX cameras versions for 115 Vac and 230 Vac.*

EX-FIX T DIMENSIONS IN MM



Mounting pattern:



## RELATED

---



**Siqura TC-336 and TC-640**  
Assembly thermal modules 336x256 or 640x512

---



**Siqura INT-RJ / INT-SM / INT-MM**  
Network Interface and cable tail of the Siqura SA or EX cameras

---



**Siqura Ex e Termination Box**  
316L Ex e termination box for EX cameras

---



**Siqura EX mounting accessories**  
316L Mounting accessories for the EX-FIX and EX-PTZ series

---