

EX3-FIX IR SERIES

3rd Generation 316L all weather fixed IR illuminator

DESCRIPTION

The EX3-FIX IR illuminator is made in a rugged, corrosion proof housing designed for use in hazardous areas in onshore, offshore, marine and heavy industrial environments. The housing is constructed from electro-polished 316L stainless steel for maximum corrosion protection. It comes with two M20x1.5 cable entries and is available for 230 Vac power.

FEATURES

Corrosion protected 316L stainless-steel

14 x SMD high power IR Leds

Circular beam patterns 15° or 34°

850 nm wavelength

Integrated power supply

Low maintenance



Description

Corrosion free 316L construction

The EX3-FIX IR EX d housing is suited to be used hazardous, salty or sulfur rich environments. 100% of the camera housing is made of corrosion proof 316L steel.

IR LED technology

The Illuminator is fitted with 14 state-of-the-art 850nm SMD LEDs. The LED array is available in 2 different beampatterns (15° or 34°) for optimal illumination.

(c) 20240308

Mechanical

Ingress protection rating	IP66/ IP67
Impact rating (casing)	IK10
Body material	Electro-polished 316L stainless steel
Sunshield	No
Ambient temperature (Tamb)	-60 °C to +60°C, +75 °C peak
- Cold start	-30°C
Cable entry	2x M25x1.5
Weight	8 kg (packaged: 9.5 kg)

Certifications

Certification	ATEX; IECEx, UKEX (INMETRO pending)
Rating	Ex db IIC T5/4 Gb -60°C Tamb +40/60°C Ex tb IIIC 100/135°C Db -60°C Tamb +40/60°C
Ingress protection rating	IP66, IP68 (3m, 30min) and IP69, Nema-4x
Impact rating (casing)	IK10
Vibrations and shock	EN/IEC 60068-2-6; EN/IEC 60068-2-27; DNV-CG-0339
ATEX/UKEX Standards	EN 60079-0; EN 60079-1; EN 60079-31
IECEX Standards	IEC 60079-0; IEC 60079-1; IEC 60079-31
EMC	EN 55035; EN/IEC 61000-6-4; EN/IEC 61000-3-2; EN/IEC 61000-3-3; EN/IEC 61000-6-2; CISPR-32; CISPR-35
LVD	EN/IEC 62368-1

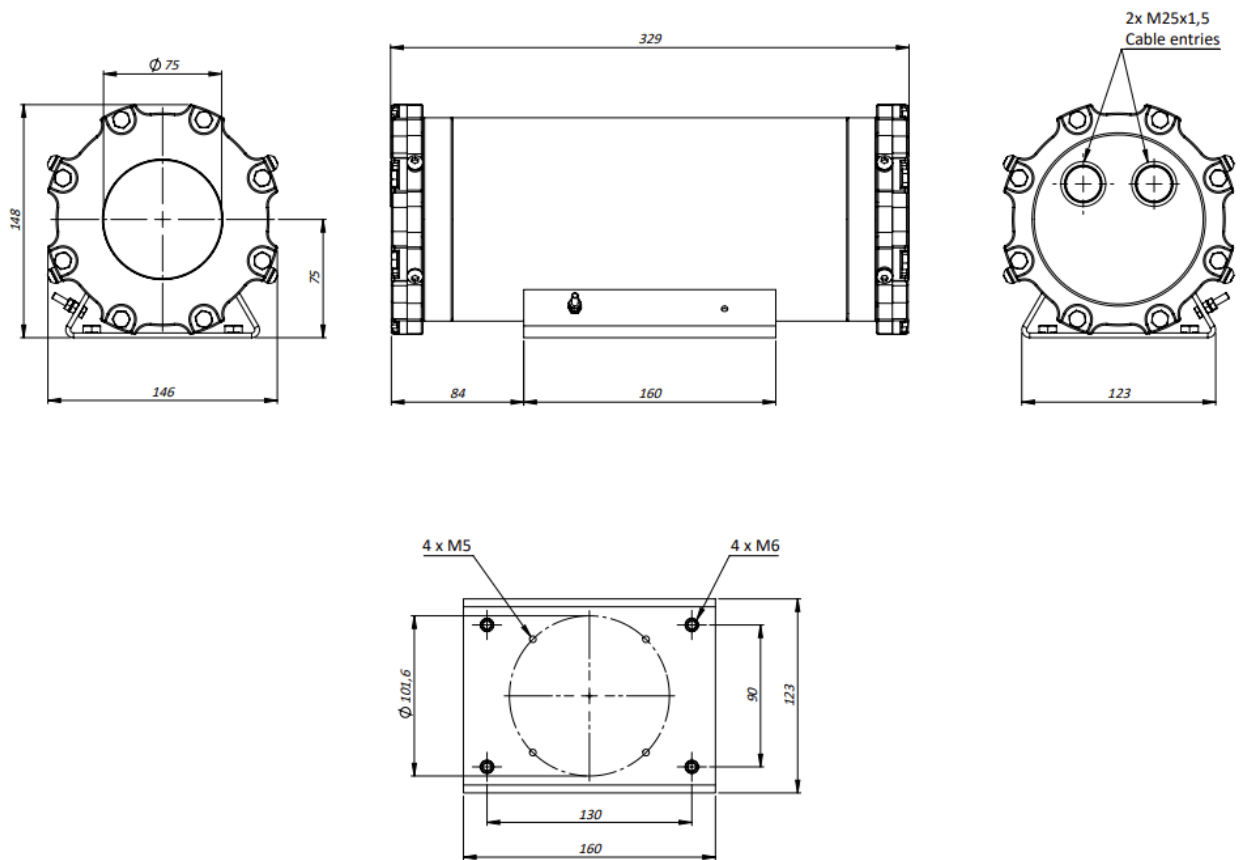
Electrical

Power rating	AC or DC 24 V, AC 120 V, AC 230 V (+/-10%)
Power consumption	25 W
IR LEDs	14
Wavelength	850 nm
Circular beam pattern	
- EX-FIX24IR15	15°
- EX-FIX24IR34	34°

Ordering information

EX3-FIX24IR15	3rd Gen EX 15° IR-illuminator, 24 VAC
EX3-FIX24IR34	3rd Gen EX 34° IR-illuminator, 24 VAC
EX3-FIX115IR15	3rd Gen EX 15° IR-illuminator, 120 VAC
EX3-FIX115IR34	3rd Gen EX 34° IR-illuminator, 120 VAC
EX3-FIX230IR15	3rd Gen EX 15° IR-illuminator, 230 VAC
EX3-FIX230IR34	3rd Gen EX 34° IR-illuminator, 230 VAC
EX/SA-MB-2FIX	Mounting bracket for 2 FIX camera housings

DIMENSIONS IN MM.



RELATED



Siqura EX mounting accessories

316L Mounting accessories for the EX-FIX and EX-PTZ series