

# EX3-FIX T SERIES

## 3rd Generation EX FIX thermal camera 316L

### DESCRIPTION

The EX3-FIX camera housing is an innovative, rugged, and corrosion proof camera station made for use in hazardous areas in onshore, offshore, marine and heavy industrial environments. The EX3 camera station is designed for easy installation and on-site repairs. The thermal camera housing is only available in combination with a TKH Security thermal camera module, such as the TC3-X series and an interface/cable tail (INT3-RJ/SM/MM)

### FEATURES

Corrosion protected 316L stainless-steel

ATEX, IECEx, UKEX and INMETRO certified

Grid protected germanium window (diameter 50 mm)

Suited for 9, 13, 19, 25, 35, 50 mm thermal lenses

Nema-4X, IP66, IP68 and IP69

Integrated power supply (24, 120 or 230 Vac)

Integrated heater

Electro-polished 316L sun-shield

Optional direct to fiber



## Description

### Corrosion free 316L construction

The EX3-FIX T housing is designed for use in hazardous areas in onshore, offshore, marine and heavy industrial environments. The camera housing is made of corrosion proof 316L steel, protected against salty and sulfur rich environments.

### Thermal camera

The EX3-FIX T is to be fitted with one of the TKH Security thermal modules, such as the TC3-X series. The germanium window is standard protected with 316L grid.

### ATEX, IECEx, UKEX and INMETRO certified

The EX3-FIX is fully certified for hazardous areas zone 1 and 2 for gas and zone 21 and 22 for dust for Europe (ATEX), world-wide (IECEx), United Kingdom (UKEX), and for Brazil (INMETRO). The certification includes the thermal camera modules.

### Integrated heater

The housing comes with a built-in thermally controlled heater. It regulates the humidity inside the camera and prevents ice or condensation from forming on the optical window.

(c) 20250210

## Mechanical

Body material	Electro-polished 316L stainless steel
Window	AR/DLC germanium window
- Size	diameter 50 mm; with protective grid
Sunshield	Standard
Ambient temperature (Tamb)	-60 °C to +60°C, +75 °C peak
- Cold start	-30°C
Relative humidity	5% to 100%
Cable entry	2x M25x1.5
Weight	10.5 kg (Packaged: 12 kg)

## Certifications

Certification	ATEX; IECEx, UKEX, INMETRO
Rating	II 2 G Ex db IIC T6/5/4 Gb -60°C Tamb +60/75/80°C II 2 D Ex tb IIIC T85/100/135°C Db -60°C Tamb +60/75/80°C
Ingress protection rating	IP66, IP68 (3m, 30min) and IP69, Nema-4x
Impact rating (casing)	IK10
Vibrations and shock	EN/IEC 60068-2-6; EN/IEC 60068-2-27; DNV-CG-0339
ATEX/UKEX Standards	EN 60079-0; EN 60079-1; EN 60079-31
IECEX Standards	IEC 60079-0; IEC 60079-1; IEC 60079-31
INMETRO Standards	ABNT NBR IEC 60079-0:2020 ABNT NBR IEC 60079-1:2016 ABNT NBR IEC 60079-31:2022
EMC	EN 55035; EN/IEC 61000-6-4; EN/IEC 61000-3-2; EN/IEC 61000-3-3; EN/IEC 61000-6-2; CISPR-32; CISPR-35
LVD	EN/IEC 62368-1

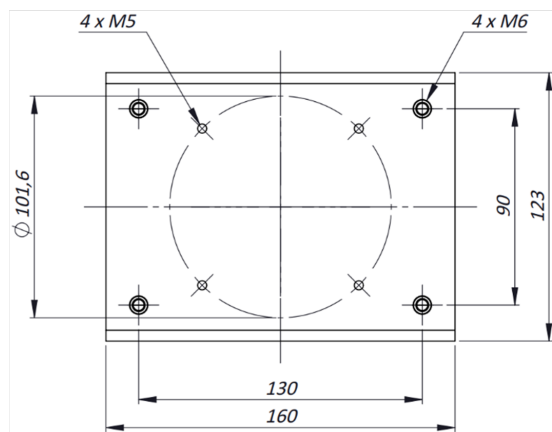
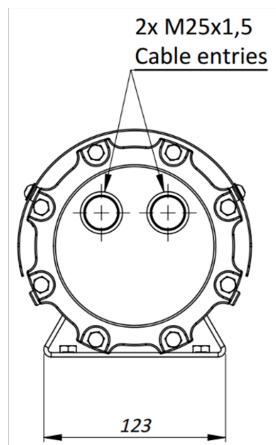
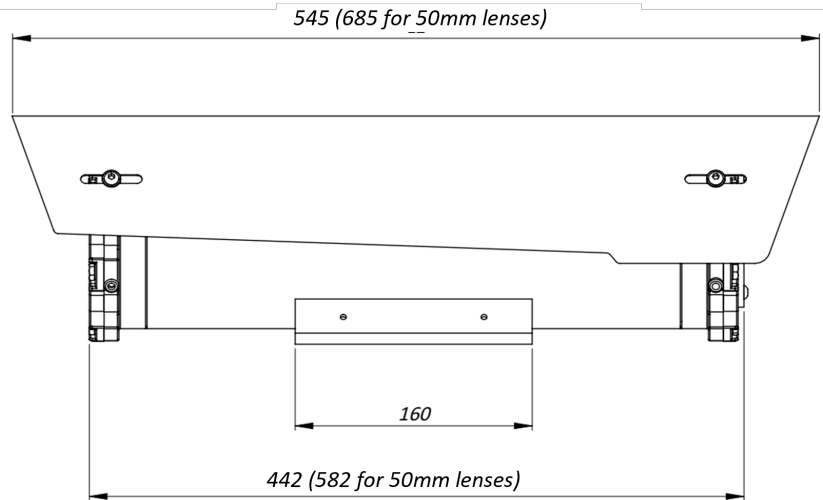
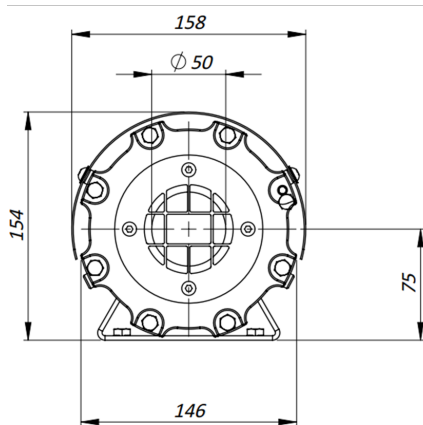
## Electrical

Power rating	EX3-FIX24T	EX3-FIX120T	EX3-FIX230T
	24 Vac +/-10%	120 Vac +/-10%	230 Vac +/-10%
	50/60Hz	50/60Hz	50/60Hz
Max power consumption	40 W	40 W	40 W
Internal Heater	Standard		
- Heater control	On:12°C +/- 4°C; Off: 20°C +/- 3°C		
Integrated wiper	No		


## Ordering information

EX3-FIX24T	3rd Gen EX FIX Thermal Camera 316L, 24VAC
EX3-FIX120T	3rd Gen EX FIX Thermal Camera 316L 120VAC
EX3-FIX230T	3rd Gen EX FIX Thermal Camera 316L 230VAC
Cable tails and interfaces	Refer to "Siqua INT3-RJ / INT3-SM / INT3-MM"


DIMENSIONS IN MMM




RELATED




**Siqura TC3-X**  
Open-frame 3rd generation thermal camera, 384x288 or 640x512



**Siqura INT3-RJ / INT3-SM / INT3-MM / INT3-EoC**  
Network Interface and cable tail of the Siqura SA3 or EX3 cameras



**Siqura EX-JB01**  
316L Ex e termination box for EX cameras



**Siqura EX mounting accessories**  
316L Mounting accessories for the EX-FIX and EX-PTZ series