

EX3-PTZ D-IR

3rd Gen EX PTZ Camera 316L with 34° IR-illuminator

DESCRIPTION

The EX3-PTZ D-IR camera housing is an innovative, rugged corrosion proof dual head camera station designed for use in onshore, offshore, marine and heavy industrial environments. The EX3 camera station is designed for easy installation and on-site repairs. The combination of infrared illumination and day/night cameras facilitates 24/7 remote camera surveillance and analytics. The dual-head camera housing is not sold separately, it is only available in combination with a Siqua daylight camera module, such as the 33x zoom BC822v2H3-AS, 22x zoom 4K BC980H2-AS, or 4x zoom BC840v2-M04-AS, and an interface/cable tail (INT3-RJ/SM/MM)

FEATURES

Corrosion protected 316L stainless-steel

ATEX, IECEx, UKEX and INMETRO certified

Nema-4X, IP66, IP68 and IP69

Low stationary power consumption (<10W)

360° Continuous pan and +/-90° tilt

Integrated 850 nm IR-LED illuminator (34° beam)

Integrated power supply (24, 115 or 230 Vac)

Integrated heater and wiper

Electro-polished 316L sun-shields

Easy access by integrated EX d Junction box



Description

Reliable and easy to maintain

EX3-PTZD-IR innovative design resulted in a highly reliable camera with extended lifetime of the motors, high precision gear technology and improved accessibility. It improves not only the installation time, but also the reparability of the camera station over its lifetime, thus lowering the operational costs of the camera in general.

Low power consumption

The EX3-PTZ D-IR is characterized by its low power consumption. While most PTZ cameras consume a lot of power even when the camera is not moving, the EX3-PTZ D-IR consumes less than 10 W when the camera is in stationary position. Mechanical brakes in both pan and tilt positions hold the camera in its stationary position, while the motors are switched off.

Day-Night camera

The EX3-PTZ D-IR is fitted with either a Siquira 33x zoom ip camera, the bc822v2H3-AS, the 22x zoom 4K camera BC980H2-AS, or 4x zoom BC840v2-M04-AS. It is standard equipped with a wiper and prepared for a washer installation. A 10 liter pressurized washer tank can be obtained separately.

IR-Illumination

The other head of the EX3-PTZ D-IR is fitted with a 14-LED infrared illuminator. This powerful IR-LED array gives a circular beam pattern of 34 degrees, enough to observe a person at long distances.

ATEX, IECEx, UKEX and INMETRO certified

The EX3-PTZ is fully certified for hazardous areas zone 1 and 2 for gas and zone 21 and 22 for dust for Europe (ATEX), world-wide (IECEx), United kingdom (UKEX), and for Brazil (INMETRO). The certification includes the optical camera modules and illuminator.

(c) 20250210

Mechanical

Body material	Electro-polished 316L stainless steel
Optical Window	High-Grade Tempered Optical Glass
- Size	diameter 75 mm; 10 mm thick
Sunshield	Standard
Integrated wiper	Standard on the optical window
Rotation	360° Continuous rotation
Tilt angle	+90° to -90°
Variable speed	0° to 40°/sec pan, 0° to 20°/sec tilt (peak)
Pan/tilt torque	20 Nm (limited by safety device)
Drive mechanism	Reinforced toothed belt
Backlash	less than 0.1°
Preset accuracy	better than 0.04°
Ambient temperature (Tamb)	-60 °C to +60°C, +75 °C peak
- Cold start	-30°C
Relative humidity	5% to 100%
Cable entry	1x M25x1.5
Weight	39 kg (Packaged: 44 kg)

Certifications

Certification	ATEX; IECEx, UKEX, INMETRO
Rating	II 2 G Ex db IIC T5/4 Gb -60°C Tamb +40/60°C II 2 D Ex tb IIIC 100/135°C Db -60°C Tamb +40/60°C
Ingress protection rating	IP66, IP68 (3m, 30min) and IP69, Nema-4x
Impact rating (casing)	IK10
Vibrations and shock	EN/IEC 60068-2-6; EN/IEC 60068-2-27; DNV-CG-0339
ATEX/UKEX Standards	EN 60079-0; EN 60079-1; EN 60079-31
IECEX Standards	IEC 60079-0; IEC 60079-1; IEC 60079-31
INMETRO Standards	ABNT NBR IEC 60079-0:2020 ABNT NBR IEC 60079-1:2016 ABNT NBR IEC 60079-31:2022
EMC	EN 55035; EN/IEC 61000-6-4; EN/IEC 61000-3-2; EN/IEC 61000-3-3; EN/IEC 61000-6-2; CISPR-32; CISPR-35
LVD	EN/IEC 62368-1

Illuminator

IR LEDs	14
Wavelength	850 nm
Circular beampattern	Circular 34°

Electrical

Power rating	EX3-PTZ24D-IR	EX3-PTZ120D-IR	EX3-PTZ230D-IR
	AC 24 V +/-10%	AC 120 V +/-10%	AC 230 V +/-10%
	50/60Hz	50/60Hz	50/60Hz
Max power consumption	155 W	155 W	155 W
Min power consumption (no heater, P/T, IR)	10 W min	10 W min	10 W min

Specs



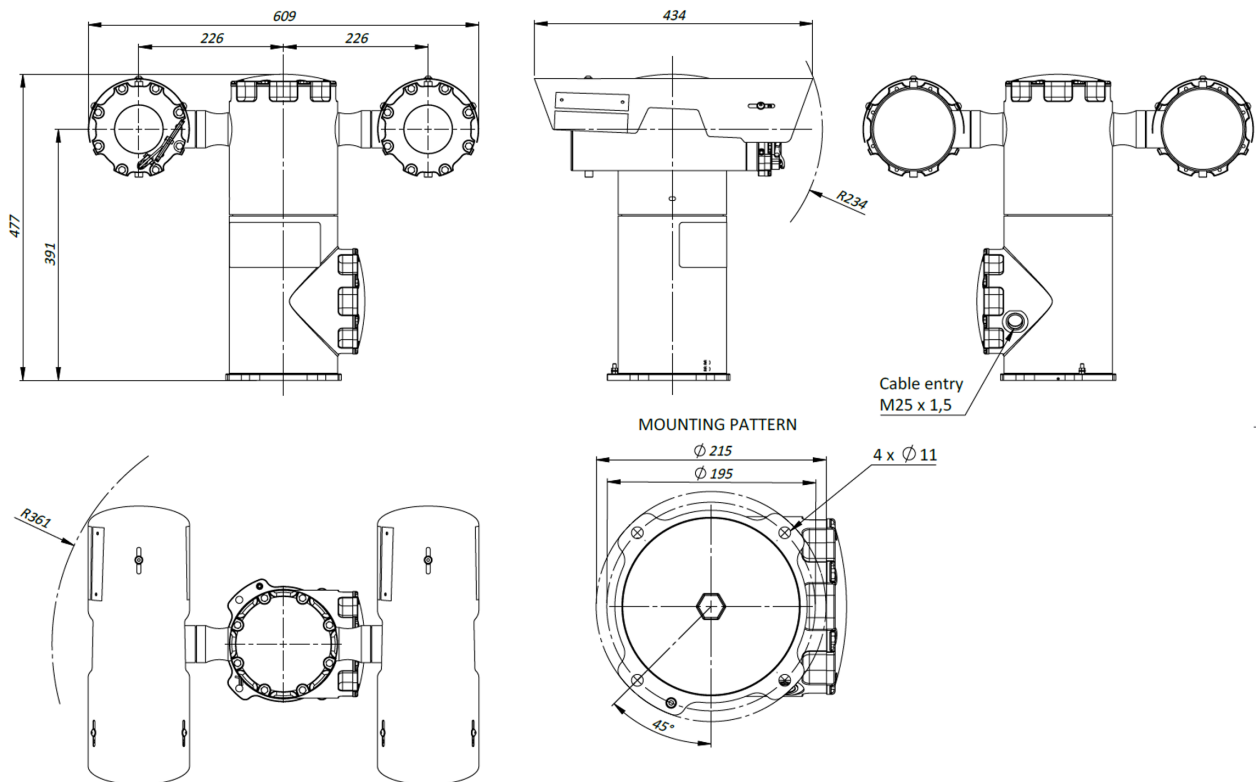
Electrical

Internal Heater	Standard
- Heater control	On:12°C +/- 4°C; Off: 20°C +/- 3°C
- Gears/Motors	Electronically controlled de-icing

Ordering information

EX3-PTZ24D-IR34	3rd Gen EX PTZ Camera 316L with 34° IR-illuminator, 24VAC
EX3-PTZ120D-IR34	3rd Gen EX PTZ Camera 316L with 34° IR-illuminator, 120VAC
EX3-PTZ230D-IR34	3rd Gen EX PTZ Camera 316L with 34° IR-illuminator, 230VAC
Cable tails and interfaces	Refer to "Siqua INT3-RJ / INT3-SM / INT3-MM"

DIMENSIONS IN MM



RELATED



Siqura BC822v2H3-AS
Assembly 33x zoom IP camera, 3MP, AF, Day/night, H.265/H.264



TKH Security BC980H2-AS
8MP IP Box camera with integrated 22x zoom lens



Siqura INT3-RJ / INT3-SM / INT3-MM / INT3-EoC
Network Interface and cable tail of the Siqura SA3 or EX3 cameras



Siqura EX-JB01
316L Ex e termination box for EX cameras



Siqura EX WP10
10 litres pressurized water tank in 316L cabinet