

EX3-PTZ D SERIES

3rd Gen EX PTZ Camera 316L

DESCRIPTION

The EX3-PTZ D camera housing is an innovative, rugged corrosion proof dual head camera station designed for use in onshore, offshore, marine and heavy industrial environments. The combination of thermal imaging and daylight cameras facilitates 24/7 remote camera surveillance and analytics. The camera housing is only available in combination with a TKH Security daylight camera module (33x zoom BC822v2H3-AS, 22x zoom 4K BC980H2-AS, or 4x zoom BC840v2-M04-AS), a thermal module from the TC3 series, and an interface/cable tail (INT3-RJ/SM/MM)

FEATURES

Corrosion protected 316L stainless-steel

ATEX, IECEx, UKEX and INMETRO certified*

Dual head camera for day- and night-vision

Grid protected germanium window (diameter 50 mm)

Suited for 9, 13, 19, 25, 35, 50 mm thermal lenses

Nema-4X, IP66, IP68 and IP69

Integrated power supply (24, 115 or 230 Vac)

Low stationary power consumption (<10W)

Integrated heaters and wiper

Electro-polished 316L sun-shields

Easy access by integrated EX d Junction box



Description

Reliable and easy to maintain

EX3-PTZ D innovative design resulted in a highly reliable camera with extended lifetime of the motors, high precision gear technology and improved maintainability. It improves not only the installation time, but also the reparability of the camera station over its lifetime, thus lowering the operational costs of the camera in general.

Dual imaging

The EX-PTZ D comes with a optical and thermal imager. The thermal sensor, an uncooled micro-bolometer, converts invisible infrared radiation into visible thermal images. The TC3 series thermal module offer a range of different lenses, resolutions. Its grid protected window it suitable for lenses from 9 mm up to 50 mm.

The optical imager can be a 33x zoom ip camera, the bc822v2H3-AS, or 22x zoom 4K camera, BC980H2. This head is standard equipped with a wiper and prepared for a washer installation. A 10 litre pressurized washer tank can be obtained separately.

Corrosion free 316L construction

The dual head PTZ camera is made of corrosion proof 316L stainless steel suited to operate in salty or sulfur rich environments. The hard carbon coated germanium window is additionally protected by a 316L grid.

ATEX, IECEx, UKEX and INMETRO certified

The EX-PTZ D is fully certified for hazardous areas zone 1 and 2 for gas and zone 21 and 22 for dust for Europe (ATEX), world-wide (IECEx), United kingdom (UKEX), and for Brazil (INMETRO). The certification includes the thermal module from the TC-336 or TC-640 series and the daylight camera (BC822v2H3-AS or BC980H2 or BC840v2-M04-AS).

Integrated heaters

Both camera heads are fitted with a thermal controlled heater. It regulates the humidity inside the camera and prevents ice or condensation forming on the germanium or optical window.

*: INMETRO certification is pending

(c) 20240312

Mechanical

| | |
|----------------------------|--|
| Body material | Electro-polished 316L stainless steel |
| Optical Window | High-Grade Tempered Optical Glass |
| - Size | diameter 75 mm; 10 mm thick |
| Thermal Window | Diamond-like Coated (DLC) germanium |
| - Size | diameter 50 mm; protected with 316L grid |
| Sunshield | Standard |
| Integrated wiper | Standard on the optical window |
| Rotation | 360° Continuous rotation |
| Tilt angle | +90° to -90° |
| Variable speed | 0° to 40°/sec pan, 0° to 20°/sec tilt (peak) |
| Pan/tilt torque | 20 Nm (limited by safety device) |
| Drive mechanism | Reinforced toothed belt |
| Backlash | less than 0.1° |
| Preset accuracy | better than 0.04° |
| Ambient temperature (Tamb) | -60 °C to +60°C, +75 °C peak |
| - Cold start | -30°C |
| Relative humidity | 5% to 100% |
| Cable entry | 1x M25x1.5 |
| Weight | 39 kg (Packaged: 44 kg) |

Certifications

| | |
|---------------------------|---|
| Certification | ATEX; IECEx, UKEX (INMETRO pending) |
| Rating | Ex db IIC T6/5/4 Gb -60°C Tamb +60/75/80°C Ex tb IIIC T85/100/135°C Db -60°C Tamb +60/75/80°C |
| Ingress protection rating | IP66, IP68 (3m, 30min) and IP69, Nema-4x |
| Impact rating (casing) | IK10 |
| Vibrations and shock | EN/IEC 60068-2-6; EN/IEC 60068-2-27; DNV-CG-0339 |
| ATEX/UKEX Standards | EN 60079-0; EN 60079-1; EN 60079-31 |
| IECEX Standards | IEC 60079-0; IEC 60079-1; IEC 60079-31 |
| EMC | EN 55035; EN/IEC 61000-6-4; EN/IEC 61000-3-2; EN/IEC 61000-3-3; EN/IEC 61000-6-2; CISPR-32; CISPR-35 |
| LVD | EN/IEC 62368-1 |

Electrical

| | | | |
|--|------------------------------------|-----------------|-----------------|
| Power rating | EX3-PTZ24D-IR | EX3-PTZ120D-IR | EX3-PTZ230D-IR |
| | AC 24 V +/-10% | AC 120 V +/-10% | AC 230 V +/-10% |
| | 50/60Hz | 50/60Hz | 50/60Hz |
| Max power consumption | 155 W | 155 W | 155 W |
| Min power consumption (no heater, P/T, IR) | 10 W min | 10 W min | 10 W min |
| Internal Heater | Standard | | |
| - Heater control | On:12°C +/- 4°C; Off: 20°C +/- 3°C | | |
| - Gears/Motors | Electronically controlled de-icing | | |

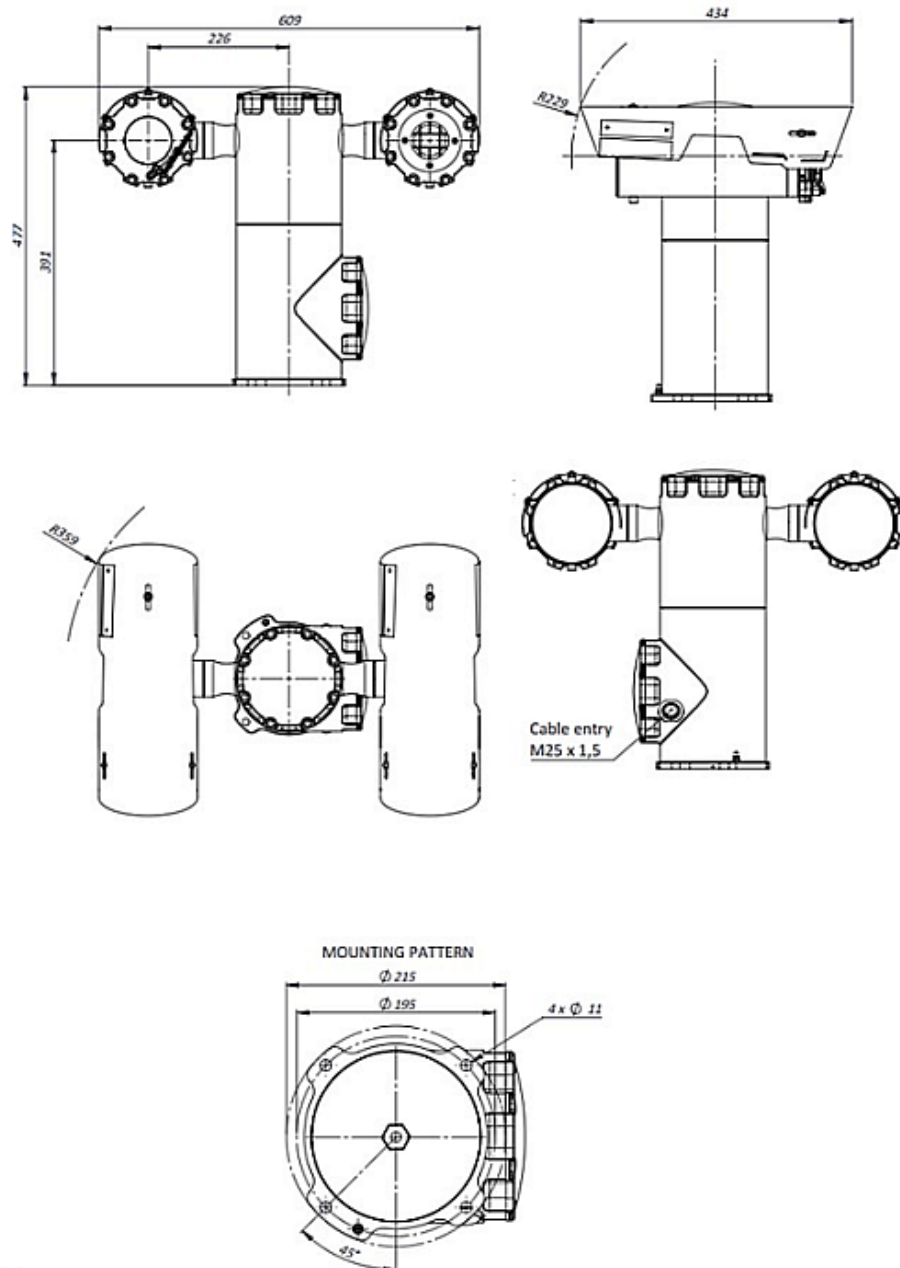
Ordering information

Specs



| Ordering information | |
|----------------------------|--|
| EX3-PTZ24D | 3rd Gen EX dual spectrum PTZ Camera 316L, 24VAC |
| EX3-PTZ120D | 3rd Gen EX dual spectrum PTZ Camera 316L, 120VAC |
| EX3-PTZ230D | 3rd Gen EX dual spectrum PTZ Camera 316L, 230VAC |
| Cable tails and interfaces | Refer to "Siqua INT3-RJ / INT3-SM / INT3-MM" |
| Optical camera | Refer to bc822v2H3-AS or BC980H2-AS |
| Thermal camera | refer to TC3-X |

DIMENSIONS IN MM



RELATED



Siqura BC822v2H3-AS
Assembly 33x zoom IP camera, 3MP, AF, Day/night, H.265/H.264



TKH Security BC980H2-AS
8MP IP Box camera with integrated 22x zoom lens



Siqura TC3-X
Open-frame 3rd generation thermal camera, 384x288 or 640x512



Siqura INT3-RJ / INT3-SM / INT3-MM
Network Interface and cable tail of the Siqura SA3 or EX3 cameras



Siqura EX-JB01
316L Ex e termination box for EX cameras



Siqura EX WP10
10 litres pressurized water tank in 316L cabinet



Siqura EX mounting accessories
316L Mounting accessories for the EX-FIX and EX-PTZ series