

# HSG04-WALL

Wall mount for HSG04, HSG05

## DESCRIPTION

HSG04-Wall is an accessory for wall mounting the HSG04 or HSG05 fixed housings.

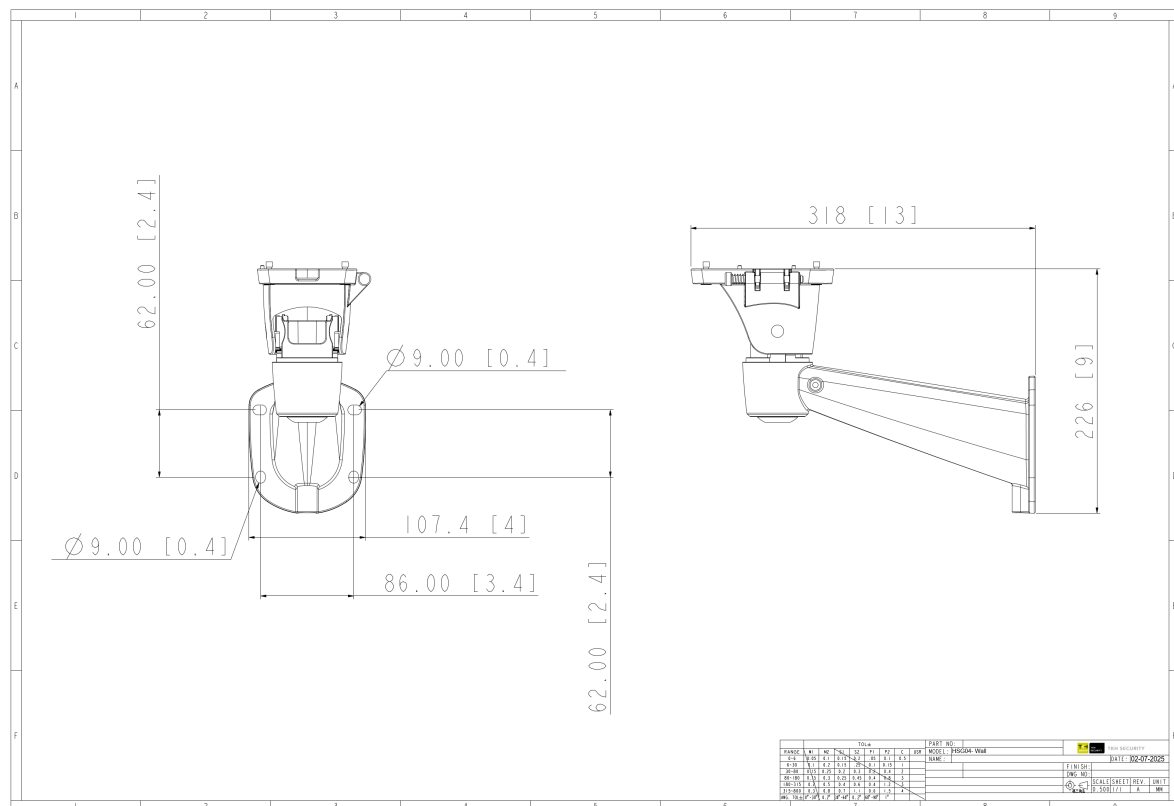


## Mechanical

Materials	Aluminium
Dimensions (L x W x H)	318 x 108 x 226 mm
Pan angle	360°
Tilt angle	-66.5°.. 0°
Color	White
Max. Load	10 kg
Weight	1.05 kg

## Ordering Information

HSG04-Wall	Wall mount for HSG04, HSG05
HSG04	Outdoor Wiper housing for a fixed box camera
HSG05	Outdoor fixed housing, 90-260VAC



## RELATED



**TKH Security HSG04**  
Outdoor Wiper housing for a fixed box camera



**TKH Security HSG05**  
Outdoor fixed housing, 90-260VAC



**TKH Security HSG04-Pole**  
Pole mount for HSG04-Wall