

# IPR-I80-SPC

## Spacer for Sirius i80 card reader

### DESCRIPTION

The Sirius i80(p) Spacer is the standard Spacer for the Sirius i80. This is often used on door posts where cable entry from the rear is not possible, or where additional space must be created from a metal door post. The Spacer is equipped with a made-to-measure profile which always enables a streamlined and precise installation of the card reader.

### FEATURES

---

Installation on metal surfaces

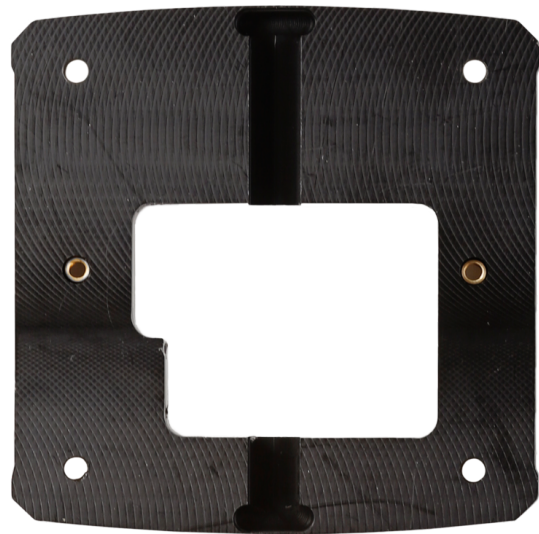
---

temperature -40 °C to +90 °C

---

Easy to install

---





## RELATED



**Sirius IPR-I80-MDF**  
Sirius i80



**Sirius IPR-I80P-MDF**  
Sirius i80p card reader pin pad MIFARE/DESFire