

JBFE50

Junction box, for FE5012

DESCRIPTION

*** Planned release October 1, 2025 ***

The JBFE50 is the junction box for the FE5012 fisheye camera from the 5000-series cameras.

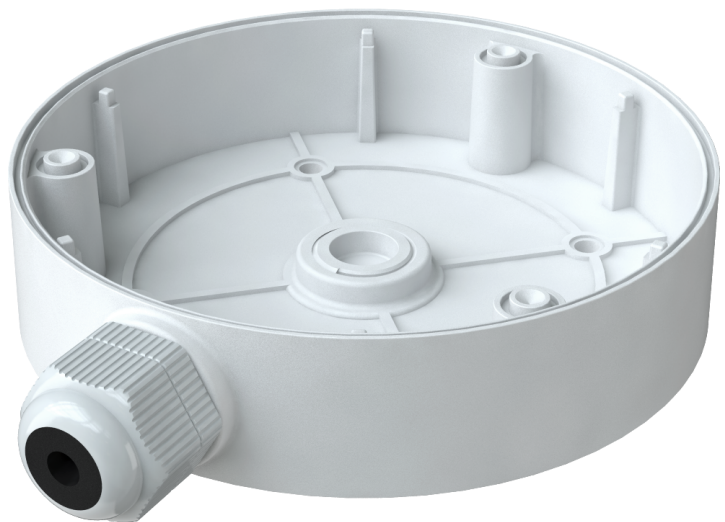
FEATURES

Aluminum alloy material with surface spray treatment

Bottom inlet and side inlet

Available for wall or ceiling mounting

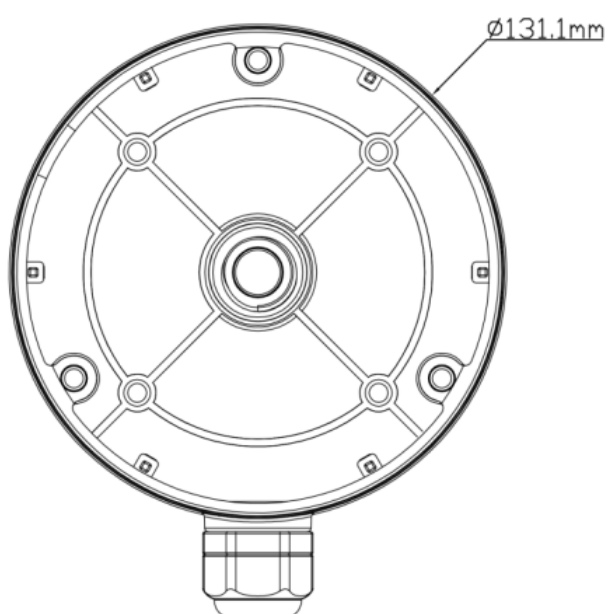
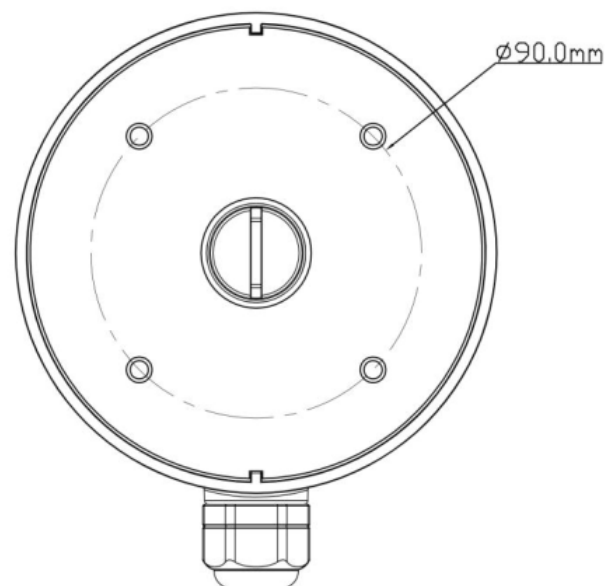
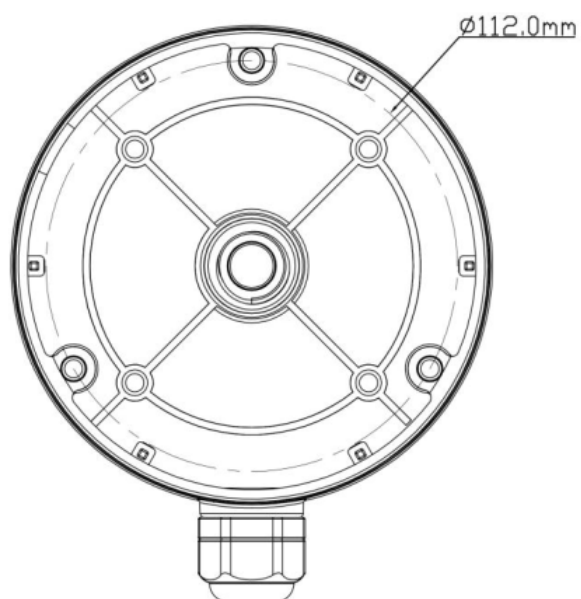
Water-proof design



Description

(c) 20250822

Mechanical	
Material	Aluminum alloy
Color	RAL 9003 (signal white)
Dimensions (H x W x D)	33 x 131 x 131 mm
Weight	0.236 kg
Load Bearing	The wall must be strong enough to withstand at least 3 times the weight of the complete camera assembly
Working Temperature	-40 .. +60 °C (-40 .. +140 °F)
Working Humidity	10 .. 90 % RH
Ordering Information	
JBFE50	Junction box, for FE5012



RELATED

**TKH Security FE5012**

12MP IP Fixed dome camera, IR, 1/1.7" CMOS

**TKH Security PM50**

Pole mount, for BL50xxM, FD50xxM, FE5012

**TKH Security WM50**

Corner mount, for FD50xxM, FE5012