

# M5 SENSOR

Camera Sensor, 5th Generation, single camera, daisy chain

## DESCRIPTION

The camera-based M5 Smart-Sensor has the ability to sense, identify, and count vehicles for individual parking spaces. Configured with one or two CMOS digital cameras, each smart-sensor can monitor up to six (6) parking spaces simultaneously. Using a distributed processing ecosystem, Camera images are continuously processed by smart AI algorithms to detect parking space occupancy changes using proprietary image processing software. For surveillance purposes, the output of the cameras can be streamed over the network. The Smart-Sensor's housing has a seal rating of IP66, preventing the ingress of water and dirt.

## FEATURES

---

ARM Processor

---

12 RGB LEDs; color mixing for thousands of possible colors

---

Field of View 105° Horizontally (3 adjustable aiming positions)

---

Min Illumination to Operate 25 lux

---

4.0 megapixel

---

Operating Temperature: -30° to 50+°C (-40° to 122+°F)

---

Humidity Range: 10% - 95%

---

Environment Sealing: IP66

---

Removable snap-click brackets for fast mounting

---

ABS and polycarbonate plastic

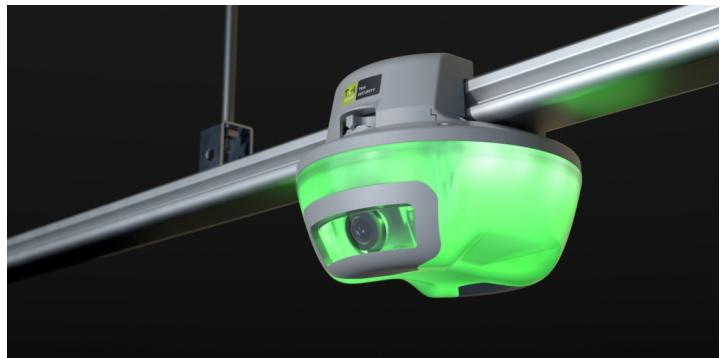
---

20-60v DC

---

5.5W typical

---

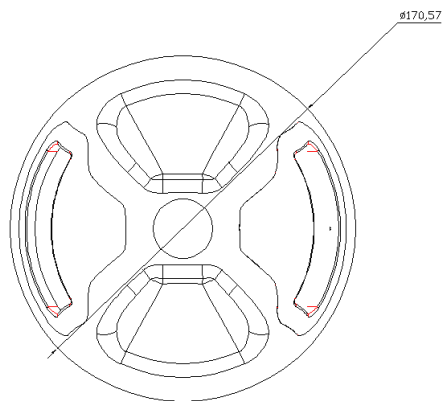
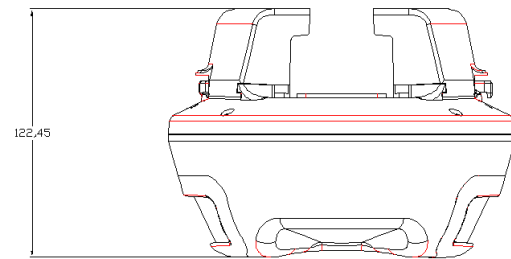
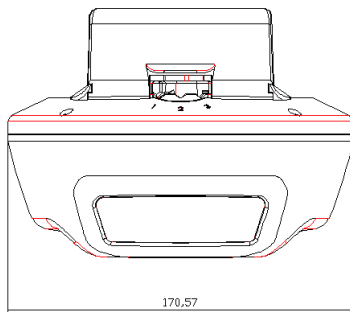


Product SafetyConforms to ANSI/UL  
Std 62368-1, Certified to CSA

---



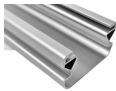
Part Numbers				
Model	M5-1000 M5-1010	M5-1200 M5-1210	M5-2000 M5-2010	M5-2200 M5-2210
Architecture				
Processor	ARM			
Imaging	Single Camera		Dual Camera	
Network	RJ45 PoE Ethernet connection designed for daisy chained installation,			
Indicator				
Technology	12 RGB LEDs; color mixing for thousands of possible colors			
Imaging				
Field of View	105° HFOV	75° HFOV	105° HFOV	75° HFOV
Aiming	3 adjustable aiming positions			
Min Illumination to Operate	25 lux			
Interfaces				
Network	TCP/IP			
Video	4.0 megapixel			
Environment				
Supported Resolution				
Operating Temperature	-30° to 50+°C (-40° to 122+°F)			
Humidity Range	10% - 95%			
Environment Sealing	IP66			
Mechanical				
Mounting	Removable snap-click brackets			
Material	ABS and polycarbonate plastic			
Electrical				
Voltage	20-60v DC			
Power Draw	5.5W typical			
Product Safety	Conforms to ANSI/UL Std 62368-1, Certified to CSA Std C22.2 NO. 62368-1			
EMC	Conforms to EN 62479:2010, EN 55032, EN 61000-3-3, EN 61547			
Dimensions				
Height	125 mm (4.9)			
Width	170 mm (6.7)			
Depth	170 mm (6.7)			
Weight	1.0 kg (2.2 lbs)			



RELATED



**TKH Security M5 Power Cabinet**  
Cabinet for M5 ecosystem



**TKH Security Channel System**  
Channel



**TKH Security VMS-NAV 1x2 Aisle Sign**  
VMS-NAV 1x2