

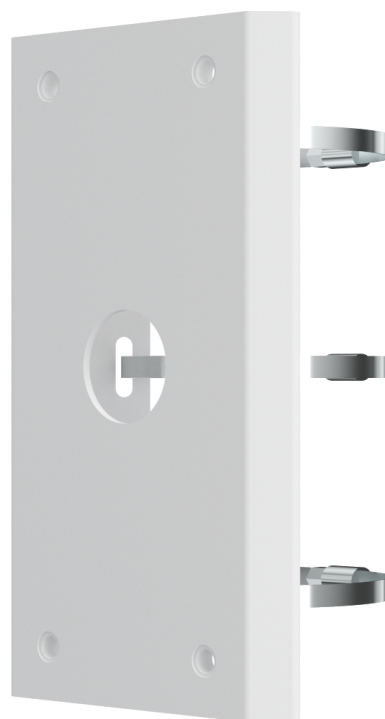
# PM50

Pole mount, for BL50xxM, FD50xxM, FE5012

## DESCRIPTION

\*\*\* Planned release October 1, 2025 \*\*\*

The PM50 is the pole mount for the BL50xxM bullet cameras, the FD50xxM fixed dome cameras, and the FE5012 fisheye camera from the 5000-series cameras.



Description

(c) 20250822

**Mechanical**

## Material

Color	RAL 9003 (signal white)
Dimensions (H x W x D)	164.7 x 54.5 x 215 mm
Weight	1.1 kg
Load Bearing	The pole must be strong enough to withstand at least 3 times the weight of the complete camera assembly
Working Temperature	-40 .. +60 °C (-40 .. +140 °F)
Working Humidity	10 .. 90 % RH

**Ordering Information**

PM50	Pole mount, for BL50xxM, FD50xxM, FE5012
------	--

## RELATED



**TKH Security BL5006M**  
6MP IP Bullet camera with 4x motor zoom, IR, 1/2.5" CMOS



**TKH Security BL5008M**  
4K IP Bullet color camera with 4x motor zoom, 1/1.8" CMOS



**TKH Security FD5006M**  
6MP IP Fixed dome camera with 4x motor zoom, IR, 1/2.5"



**TKH Security FD5008M**  
4K IP Fixed dome color camera with 4x motor zoom, 1/1.8" CMOS



**TKH Security FE5012**  
12MP IP Fixed dome camera, IR, 1/1.7" CMOS



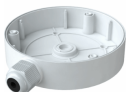
**TKH Security JBBL50**  
Junction box, for BL50xxM



**TKH Security JBFD50**  
Junction box, for FD50xxM



**TKH Security WMFD50**  
Wall mount, for FD50xxM



**TKH Security JBF50**  
Junction box, for FE5012



**TKH Security WMFE50**  
Wall mount, for FE5012