

SA3-FIX T SERIES

3rd Generation SA FIX thermal camera 316L

DESCRIPTION

The SA3-FIX camera housing is an innovative, rugged, and corrosion proof camera station made for use in corrosive areas in onshore, offshore, marine and heavy industrial environments. The SA3 camera station is designed for easy installation and on-site repairs. The thermal camera housing is only available in combination with a TKH Security thermal camera module, such as the TC3-X series and an interface/cable tail (INT3-RJ/SM/MM)

FEATURES

Corrosion protected 316L stainless-steel

DLC coated germanium window (diameter 50 mm)

Suited for 9, 13, 19, 25, 35, 50 mm thermal lenses

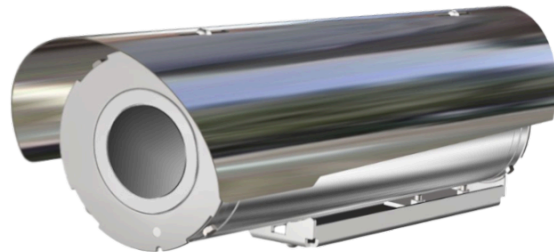
IP66 and IP67

Integrated power supply (24, 120 or 230 Vac)

Integrated heater

Electro-polished 316L sun-shield

Optional direct to fiber



Description

Corrosion free 316L construction

The SA3-FIX T housing is designed for use in onshore, offshore, marine and heavy industrial environments. The camera housing is made of corrosion proof 316L steel, protected against salty and sulfur rich environments.

Thermal camera

The SA3-FIX T is to be fitted with one of the TKH Security thermal modules, such as the TC3-X series. The germanium window is standard protected with a rugged diamond-like coating (DLC).

(c) 20260202

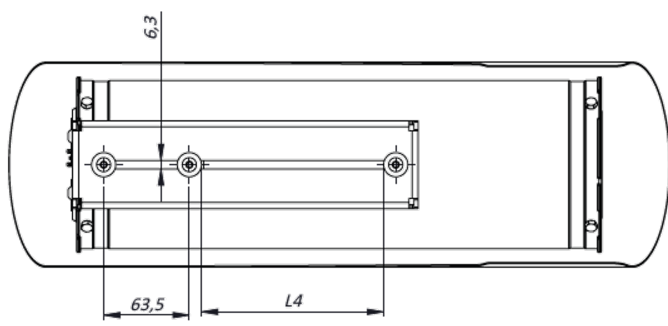
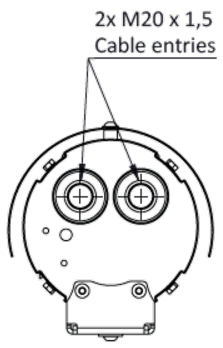
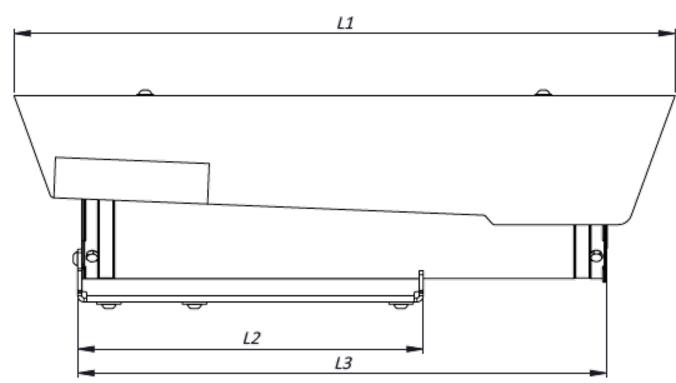
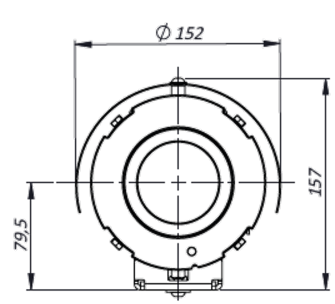
Mechanical	
Body material	Electro-polished 316L stainless steel
Window	AR/DLC germanium window
- Size	diameter 50 mm
Sunshield	Standard
Operating temperature (Tamb)	-60 °C to +75 °C (-76 °F to +167 °F) per Nema-2
- Continuous (sheltered, air temp)	-60 °C to +60 °C (-76 °F to 140 °F)
- Cold start	-30°C (-22 °F)
Relative humidity	5% to 100%
Cable entry	2x M20x1.5
Weight	5 kg (Packaged: 6.5 kg)

Certifications	
Ingress protection rating	IP66 and IP67
Impact rating (casing)	IK10
Vibrations and shock	EN/IEC 60068-2-6; EN/IEC 60068-2-27; DNV-CG-0339
EMC	EN 55035; EN/IEC 61000-6-4; EN/IEC 61000-3-2; EN/IEC 61000-3-3; EN/IEC 61000-6-2; CISPR-32; CISPR-35
LVD	EN/IEC 62368-1

Electrical			
Power rating	SA3-FIX24T	SA3-FIX120T	SA3-FIX230T
	AC 24 V +/-10%	AC 120 V +/-10%	AC 230 V +/-10%
	50/60Hz	50/60Hz	50/60Hz
Max power consumption	40 W	40 W	40 W
Internal Heater	Standard		
- Heater control	On:12°C +/- 4°C; Off: 20°C +/- 3°C		

Ordering information	
SA3-FIX24T	3rd Gen EX FIX Thermal Camera 316L 24VAC
SA3-FIX120T	3rd Gen EX FIX Thermal Camera 316L 120VAC
SA3-FIX230T	3rd Gen EX FIX Thermal Camera 316L 230VAC
Cable tails and interfaces	Refer to "Siqua INT3-RJ / INT3-SM / INT3-MM"

SA3-FIX T DIMENSIONS IN MM



Model	L1 [mm]	L2 [mm]	L3 [mm]	L4 [mm]
Up to 25 mm lens	490	256	392	135
35 to 50 mm lens	590	356	492	235

RELATED



Siqua TC3-X

Open-frame 3rd generation thermal camera, 384x288 or 640x512



Siqua INT-RJ / INT-SM / INT-MM (EoL)

Network Interface and cable tail of the Siqua SA or EX cameras



Siqua SA mounting accessories

316L Mounting accessories for the SA-FIX and SA-PTZ series
