

# SA3-PTZ SERIES

## 3rd Generation SA PTZ Camera 316L

### DESCRIPTION

The SA3-PTZ camera housing is an innovative, rugged, and corrosion proof PTZ camera station made for use in onshore, offshore, marine and heavy industrial environments. The SA3 camera station is designed for easy installation and on-site repairs. The PTZ housing is not sold separately, it is only available in combination with a Siquira daylight camera module, such as the 33x zoom BC822v2H3-AS, 22x zoom 4K BC980H2-AS, or 4x zoom BC840v2-M04-AS, and an interface/cable tail (INT3-RJ/SM/MM)

### FEATURES

Corrosion protected 316L stainless-steel

IP66 and IP67

Low stationary power consumption (<10W)

Low operational costs

Integrated power supply (24, 115 or 230 Vac)

Integrated heater and wiper

Electro-polished 316L sun-shield

Optional direct to fiber



## Description

### Reliable and easy to maintain

The SA3-PTZ innovative design resulted in a highly reliable design with extended lifetime of the motors, high precision gear technology and improved accessibility. This improves not only the installation time, but also the reparability of the camera station over its lifetime, thus lowering the operational costs of the camera in general.

### Corrosion free 316L construction

The SA3-PTZ camera is made of corrosion proof 316L stainless steel body, maintenance free and suited to operate in an corrosive atmosphere.

### Low power consumption

The SA3-PTZ is characterized by its low power consumption. While most PTZ cameras consume a lot of power even when the camera is not moving, the SA3-PTZ consumes less than 10 W when the camera is in stationary position. Mechanical brakes in both pan and tilt positions hold the camera in its stationary position, while the motors are switched off.

### Day-light camera

The SA3-PTZ is to be fitted with one of TKH Security -AS cameras, such as the 33x zoom bc822v2H3-AS, the 22x zoom 4K BC980H2-AS or the BC840v3-Mxx-AS series. The camera is standard equipped with an integrated wiper and prepared for an installation with a washer. A 10 liter washer tank (WP10) can be obtained separately.

### Integrated heater

The housing comes with a built-in thermally controlled heater. It regulates the humidity inside the camera and prevents ice or condensation from forming on the optical window.

(c) 20241119

## Mechanical

Body material	Electro-polished 316L stainless steel
Optical Window	High-Grade Tempered Optical Glass
- Size	diameter 75 mm
Sunshield	Standard
Rotation	360° Continuous rotation
Tilt angle	+90° to -90°
Variable speed	0° to 40°/sec pan, 0° to 20°/sec tilt (peak)
Pan/tilt torque	20 Nm (limited by safety device)
Drive mechanism	Reinforced toothed belt
Backlash	less than 0.1°
Preset accuracy	better than 0.04°
Operating temperature (Tamb)	-60 °C to +75 °C (-76 °F to +167 °F) per Nema-2
- Continuous (sheltered, air temp)	-60 °C to +60 °C (-76 °F to 140 °F)
- Cold start	-30°C (-22 °F)
Relative humidity	5% to 100%
Cable entry	1x M25x1.5
Weight	28.5 kg (Packaged: 33.5 kg)

## Certifications

Ingress protection rating	IP66 and IP67
Impact rating (casing)	IK10
Vibrations and shock	EN/IEC 60068-2-6; EN/IEC 60068-2-27; DNV-CG-0339
EMC	EN 55035; EN/IEC 61000-6-4; EN/IEC 61000-3-2; EN/IEC 61000-3-3; EN/IEC 61000-6-2; CISPR-32; CISPR-35
LVD	EN/IEC 62368-1

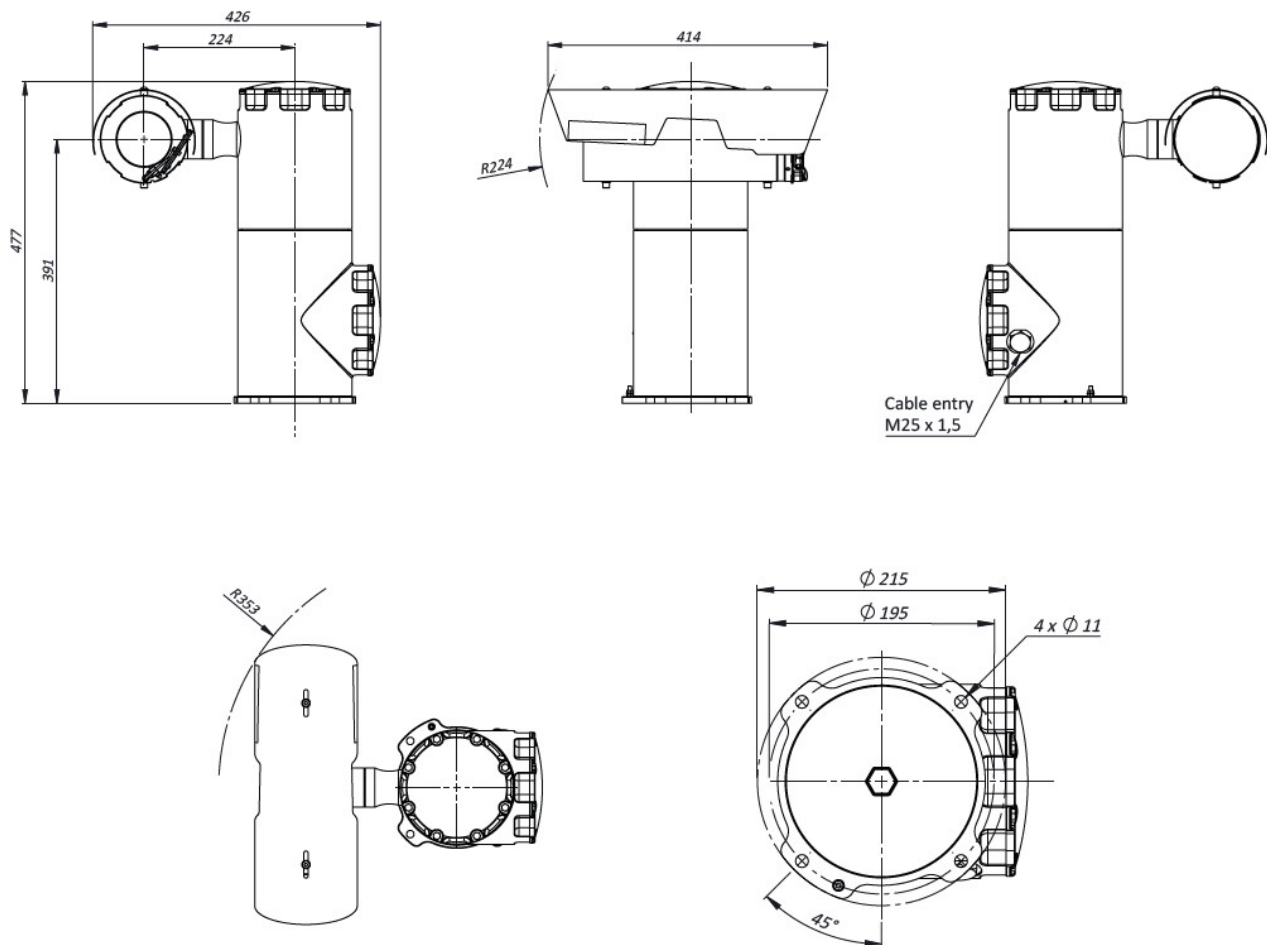
## Electrical

Power rating	SA3-PTZ24L	SA3-PTZ120L	SA3-PTZ230L
	AC 24 V +/-10%	AC 120 V +/-10%	AC 230 V +/-10%
	50/60Hz	50/60Hz	50/60Hz
Max power consumption	130W	130W	130W
Min power consumption (no heater, no P/T)	10W min	10W min	10W min
Internal Heater	Standard		
- Heater control	On:12°C +/- 4°C; Off: 20°C +/- 3°C		
- Gears/Motors	Electronically controlled de-icing		
Integrated wiper	Standard		

## Ordering information

SA3-PTZ24L	3rd Gen SA PTZ Camera 316L 24VAC
SA3-PTZ120L	3rd Gen SA PTZ Camera 316L 120VAC
SA3-PTZ230L	3rd Gen SA PTZ Camera 316L 230VAC
Cable tails and interfaces	Refer to "Siqua INT3-RJ / INT3-SM / INT3-MM"

# SA3-PTZ DIMENSIONS IN MM



## RELATED

**Siqura BC822v2H3-AS**

Assembly 33x zoom IP camera, 3MP, AF, Day/night, H.265/H.264

**TKH Security BC980H2-AS**

8MP IP Box camera with integrated 22x zoom lens

**Siqura INT-RJ / INT-SM / INT-MM (EoL)**

Network Interface and cable tail of the Siqura SA or EX cameras

**Siqura WP10**

10l washer tank, pump 10m, float switch, 316L frame

**Siqura SA mounting accessories**

316L Mounting accessories for the SA-FIX and SA-PTZ series