

SA3-PTZ T SERIES

3rd Generation SA PTZ Camera 316L

DESCRIPTION

The SA3-PTZ T thermal camera housing is an innovative, rugged, and corrosion proof PTZ camera station made for use in onshore, offshore, marine and heavy industrial environments. The SA3 camera station is designed for easy installation and on-site repairs. The PTZ housing is not sold separately, it is only available in combination with a TKH security thermal camera modules, TC3-X series, and an interface/cable tail (INT3-RJ/SM/MM)

FEATURES

Corrosion protected 316L stainless-steel

IP66 and IP67

Germanium window (diameter 75 mm) with diamond-like coating

Suited for 5, 9, 13, 19, 25, 35, 50 mm thermal lenses

Low stationary power consumption (<10W)

Low operating costs

Integrated power supply (24, 115 or 230 Vac)

Electro-polished 316L sun-shield

Optional direct to fiber



Description

Reliable and easy to maintain

The innovative design of the SA3-PTZ T resulted in a highly reliable PTZ unit with extended lifetime of the motors, high precision gear technology and improved accessibility. This improves not only the installation time, but also the reparability of the camera station over its lifetime, thus lowering the operational costs of the camera in general.

Corrosion free 316L construction

The SA3-PTZ T camera is made of corrosion proof 316L stainless steel body, maintenance free and suited to operate in an corrosive atmosphere.

Low power consumption

The SA3-PTZ T is characterized by its low power consumption. While most PTZ cameras consume a lot of power even when the camera is not moving, the SA3-PTZ T consumes less than 10 W when the camera is in stationary position. Mechanical brakes in both pan and tilt positions hold the camera in its stationary position, while the motors are switched off.

Thermal camera

The SA3-PTZ T is to be fitted with one of TKH Security TC3-X open-frame thermal cameras series. Thermal imaging can be used 24/7 for all sorts of monitoring and detection purposes. The module is fitted with video analytics to actively help with perimeter surveillance, fire detection, flare monitoring, and hotspot detection.

(c) 20240329

Mechanical	
Ingress protection rating	IP66, IP68 (3m, 30min) and IP69, Nema-4x
Impact rating (casing)	IK10
Body material	Electro-polished 316L stainless steel
Window	AR/DLC germanium window
- Size	diameter 75 mm
Sunshield	Standard
Rotation	360° Continuous rotation
Tilt angle	+90° to -90°
Variable speed	0° to 40°/sec pan, 0° to 20°/sec tilt (peak)
Pan/tilt torque	20 Nm (limited by safety device)
Drive mechanism	Reinforced toothed belt
Backlash	less than 0.1°
Preset accuracy	better than 0.04°
Operating temperature (Tamb)	-60 °C to +75 °C (-76 °F to +167 °F) per Nema-2
- Continuous (sheltered, air temp)	-60 °C to +60 °C (-76 °F to 140 °F)
- Cold start	-30°C (-22 °F)
Relative humidity	5% to 100%
Cable entry	1x M25x1.5
Weight	29 kg (Packaged: 34 kg)

Certifications	
Ingress protection rating	IP66 and IP67
Impact rating (casing)	IK10
Vibrations and shock	EN/IEC 60068-2-6; EN/IEC 60068-2-27; DNV-CG-0339
ATEX/UKEX Standards	EN 60079-0; EN 60079-1; EN 60079-31
IECEX Standards	IEC 60079-0; IEC 60079-1; IEC 60079-31
EMC	EN 55035; EN/IEC 61000-6-4; EN/IEC 61000-3-2; EN/IEC 61000-3-3; EN/IEC 61000-6-2; CISPR-32; CISPR-35
LVD	EN/IEC 62368-1

Electrical			
Power rating	SA3-PTZ24T	SA3-PTZ120T	SA3-PTZ230T
	AC 24 V +/-10%	AC 120 V +/-10%	AC 230 V +/-10%
	50/60Hz	50/60Hz	50/60Hz
Max power consumption	130W	130W	130W
Min power consumption (no heater, no P/T)	10W min	10W min	10W min
Internal Heater	Standard		
- Heater control	On:12°C +/- 4°C; Off: 20°C +/- 3°C		
- Gears/Motors	Electronically controlled de-icing		

Ordering information	
SA3-PTZ24T	3rd Gen SA thermal PTZ Camera 316L, 24VAC
SA3-PTZ120T	3rd Gen SA thermal PTZ Camera 316L, 120VAC

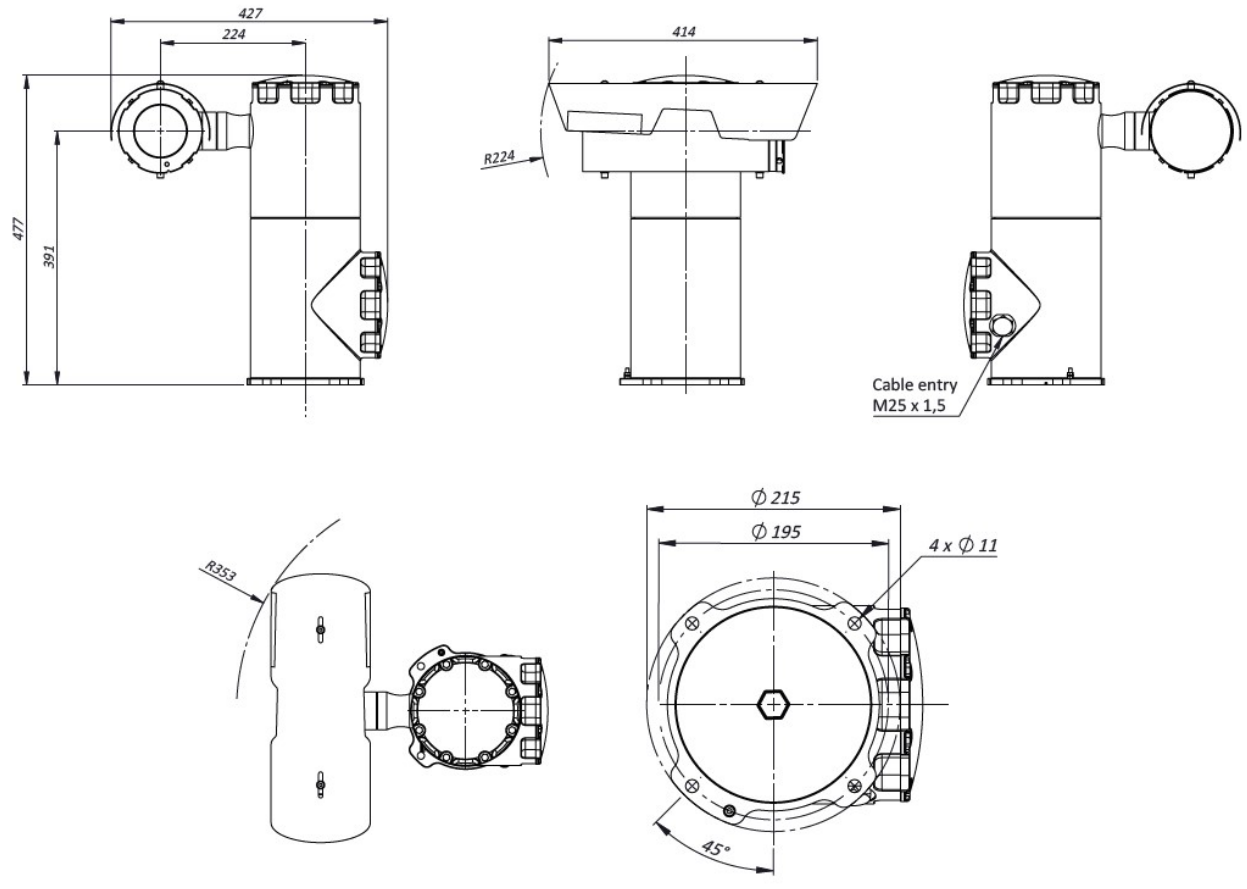
Specs



Ordering information

SA3-PTZ230T	3rd Gen SA thermal PTZ Camera 316L, 230VAC
Thermal modules	See TC3-T.
Cable tails and interfaces	See "Siqua INT3-RJ / INT-SM / INT-MM"

SA3-PTZ T DIMENSIONS IN MM



RELATED



Siqua TC3-X

Open-frame 3rd generation thermal camera, 384x288 or 640x512



Siqua INT-RJ / INT-SM / INT-MM (EoL)

Network Interface and cable tail of the Siqua SA or EX cameras



Siqua SA mounting accessories

316L Mounting accessories for the SA-FIX and SA-PTZ series
