

TL-DC-10CM

TANLock Rack handle - Door contact 10cm

DESCRIPTION

iProtect not only offers a modern and flexible Access Management System to secure buildings and other locations, but also offers an efficient way to protect your knowledge, processes and data through a central and tamper-proof locking system, the "TANLock Rack handle".

Maximum 2 door contacts can be connected to 1 TANLock Rack handle. 1 for monitoring the door and 1 for monitoring a side panel of the cabinet. Each door contact is equipped with a cable and an appropriate connector. The door contact can be ordered with a cable length of 10cm, 2m or 3m.

FEATURES

Suitable to monitor the door

Suitable to monitor the side panel



Electrical Characteristics @25C

Contact from		A
Contact rating max.	W / VA	10
Switching voltage max.	VDC	200
	VAC	140
Switching current max	A	1.0
Carry current max	A	1.2
Breakdown voltage max.	VDC	240
Total resistance max. (linitial)	Ω	1
Insulation resistance min.	Ω	10 ¹⁰

Magnetical Characteristics (of unmodified Reed Switch) @25C

Pull in range available	AT	10-13
Drop out min.	AT	4
Test coil	TC	014
Test equipment tolerance	AT	2

Operating Characteristics (un unmodified Reed Switch) @25C

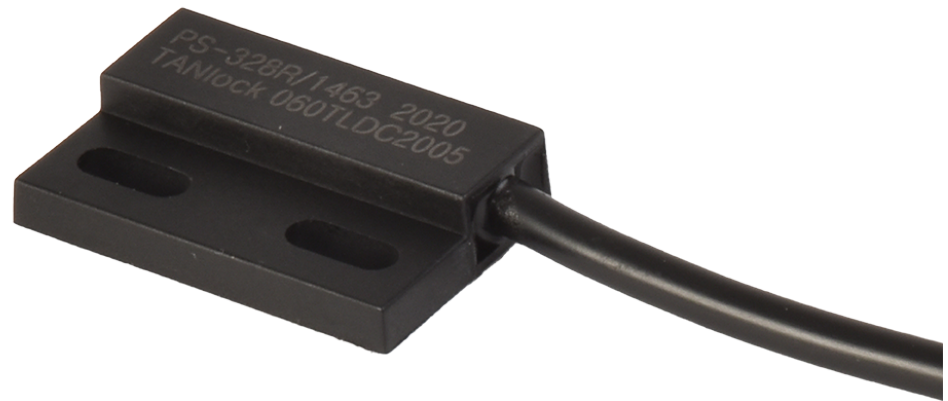
Switching frequency max.	Hz	500
Resonant frequency typ.	Hz	4000
Operate time max. (incl. bounce)	ms	1.0
Release time max.	ms	0.4

Environmental Characteristics

Operating temperature	C	-40 to +85
Storage temperature	C	-40 to +70
Vibration (50-2000 Hz)	g	20
Shock(1/2 sin 11 ms)	g	100







RELATED



FATH TL3-UN-B
TANLock Rack handle - RFID



FATH TL3-UN-Pin-B
TANLock Rack handle - RFID with PIN



FATH TL3-UN-MO-B
TANLock Rack handle - RFID / mechanical overwrite



FATH TL3-UN-Pin-MO-B
TANLock Rack handle- RFID with PIN / mechanical overwrite



FATH TL-DC-2m
TANLock Rack handle - Door contact 2m



FATH TL-DC-3m
TANLock Rack handle - Door contact 3m
