

WM12

Wall mount, for PD20xx PTZ dome series

DESCRIPTION

The WM12 is a wall mount for the PD20xx PTZ dome series cameras.



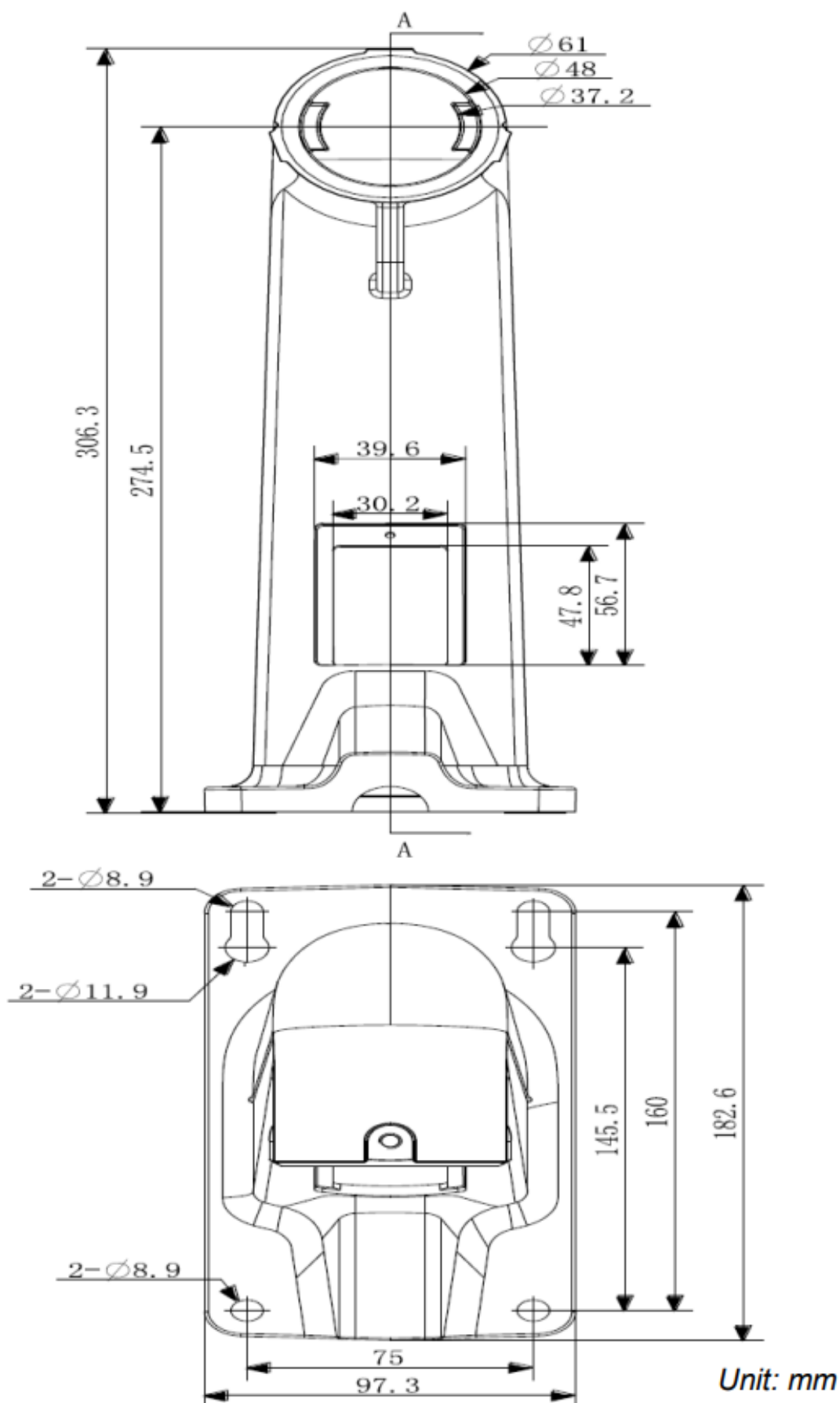
Mechanical

Material	Aluminium alloy
Color	RAL 9003 (signal white)
Dimensions (H x W x D)	97 mm 183 mm 306 mm (3.8" 7.2" 12")
Weight	1100 g (2.3 lb.)

Ordering Information

WM12	Wall mount, for PD20xx PTZ dome series
------	--





RELATED



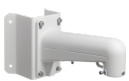
TKH Security WM12B
Wall mount with junction box, for PD20xx PTZ dome series



TKH Security PM07
Pole mount, for PD20xx PTZ dome series



TKH Security PM07B
Pole mount with junction box, for PD20xx PTZ dome series



TKH Security WM17
Corner mount, for PD20xx PTZ dome series



TKH Security WM17B
Corner mount with junction box, for PD20xx PTZ dome series



TKH Security CM11
Ceiling mount, for PD20xx-series PTZ cameras



TKH Security CM15
Ceiling mount, for PD20xx-series PTZ cameras, 25cm



TKH Security WM16
Gooseneck mount, for PD20xx PTZ dome series