

WM27JB

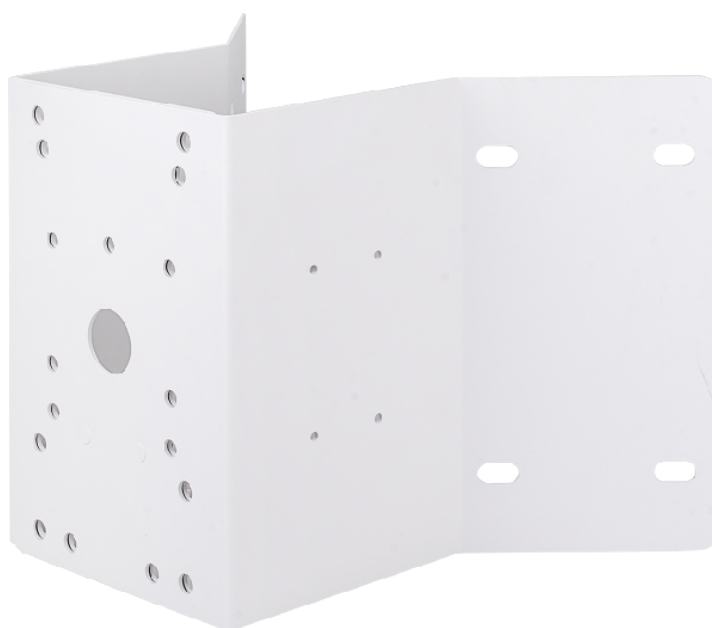
Corner mount, for JB27

DESCRIPTION

The WM27JB is a corner mount for the JB27 junction box.

FEATURES

SPCC

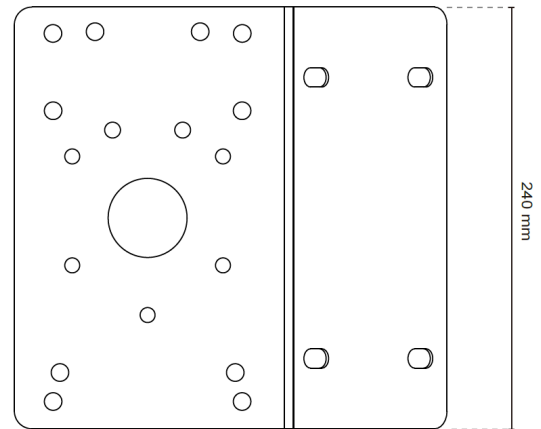
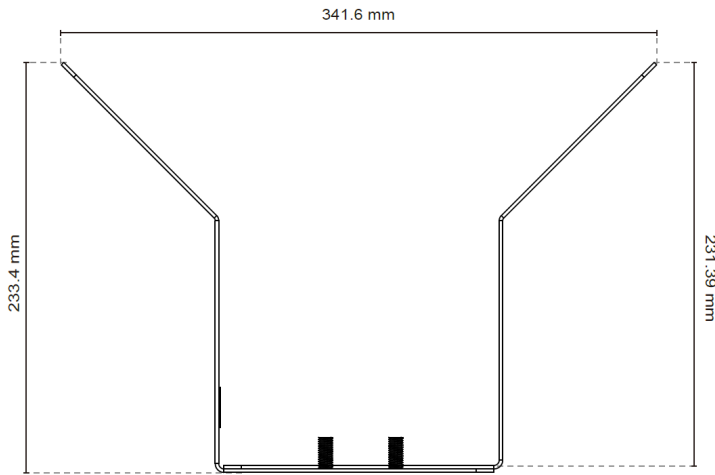


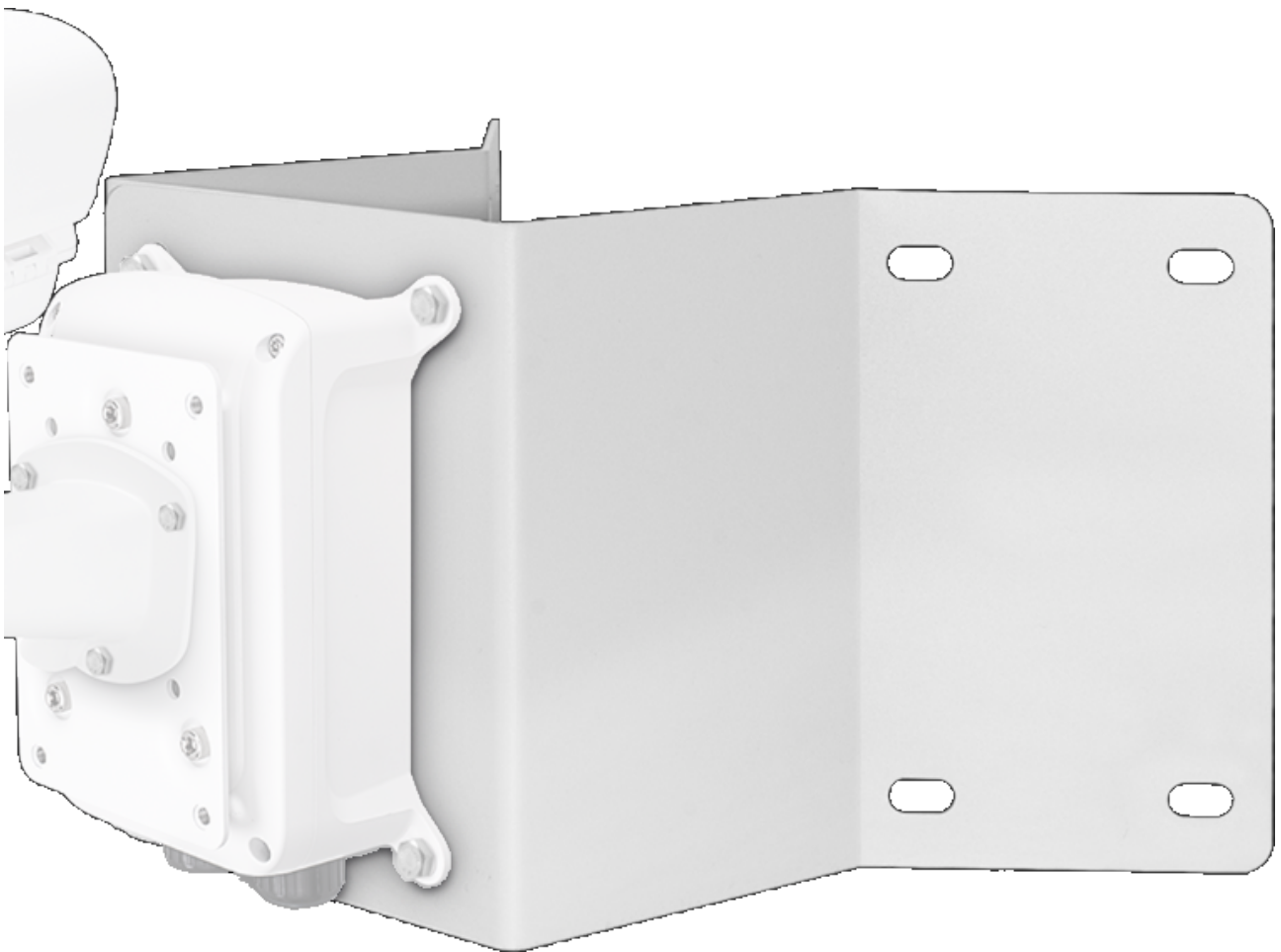
Mechanical

Materials	SPCC
Dimensions (L x W x H)	240 x 341.6 x 233.4 mm
Color	White
Max. Load	25 kg
Weight	3.13 kg

Ordering Information

WM27JB	Corner mount, for JB27
JB27	Junction box, for WM01A, WM27
WM27	Wall mount, for PD9x0
PM27JB	Pole mount, for JB27





RELATED

**TKH Security JB27**

Junction box, for WM01A, WM27

**TKH Security PM27JB**

Pole mount, for JB27

**TKH Security WM27**

Wall mount, for PD9x0