

WM50

Corner mount, for FD50xxM, FE5012

DESCRIPTION

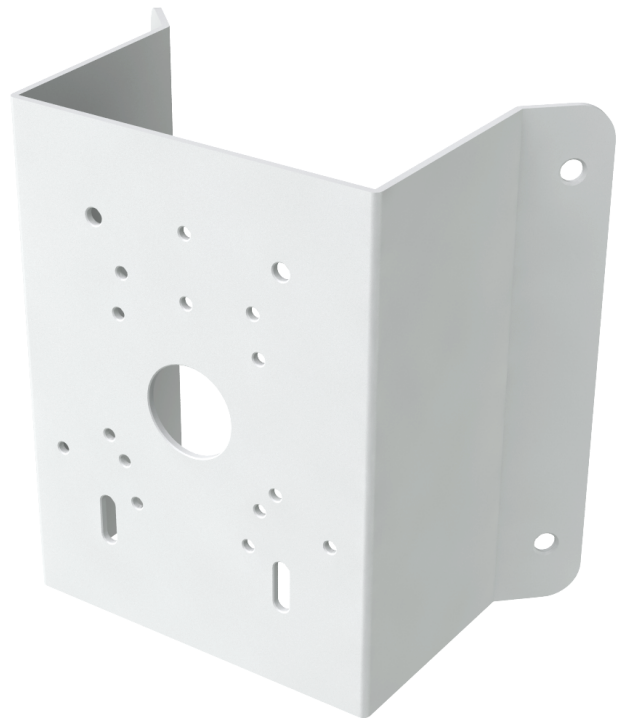
*** Planned release October 1, 2025 ***

The WM50 is the corner mount, for the FD50xxM fixed dome cameras and the FE5012 fisheye camera from the 5000-series cameras.

FEATURES

SPCC material with surface spray treatment

Corner mounting bracket for cameras



Description

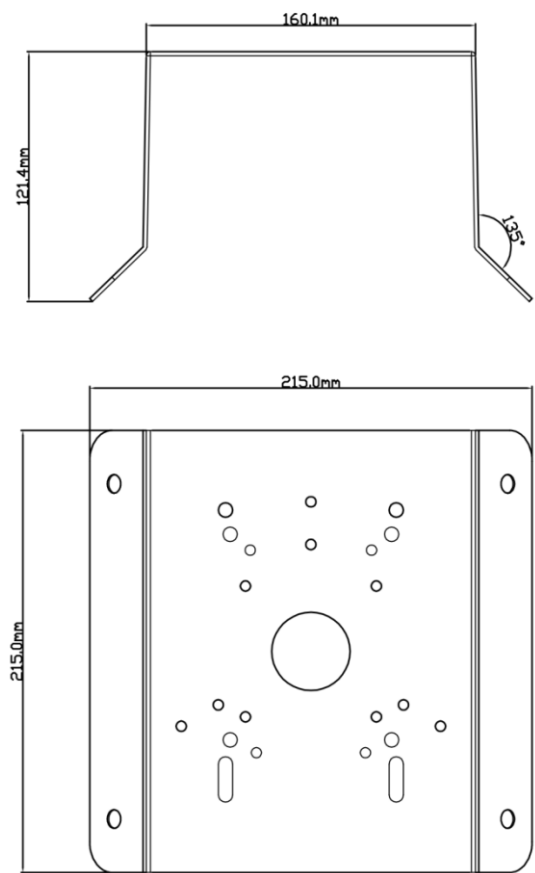
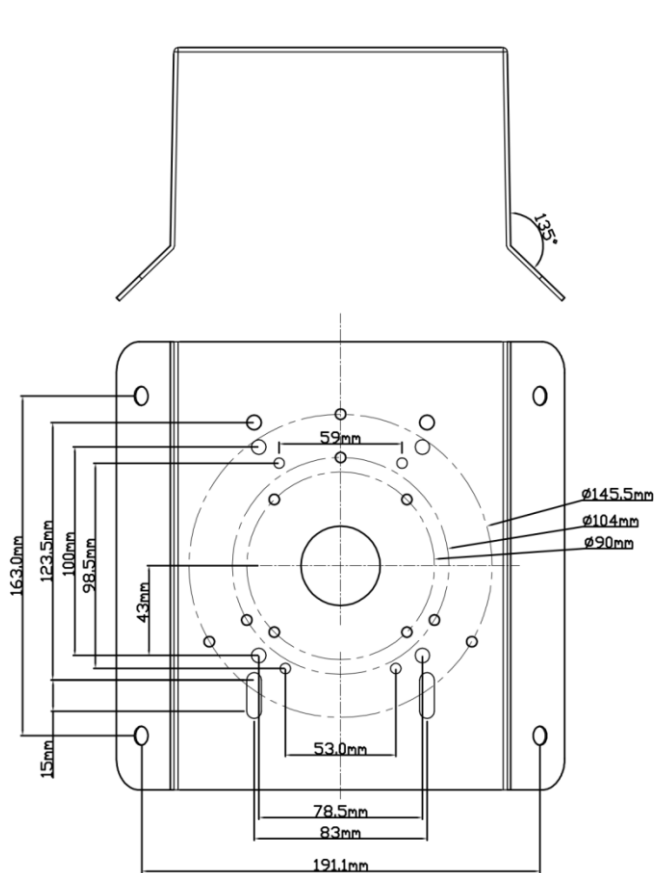
(c) 20250821

Mechanical

Material	SPCC
Color	RAL 9003 (signal white)
Dimensions (H x W x D)	215 x 121.4 x 215 mm
Weight	2.050 kg
Load Bearing	The wall must be strong enough to withstand at least 3 times the weight of the complete camera assembly
Working Temperature	-40 .. +60 °C (-40 .. +140 °F)
Working Humidity	10 .. 90 % RH

Ordering Information

WM50	Ceiling mount, for FD50xxM
------	----------------------------



RELATED



TKH Security FD5006M
6MP IP Fixed dome camera with 4x motor zoom, IR, 1/2.5"



TKH Security FD5008M
4K IP Fixed dome color camera with 4x motor zoom, 1/1.8" CMOS



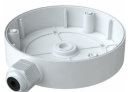
TKH Security FE5012
12MP IP Fixed dome camera, IR, 1/1.7" CMOS



TKH Security JBF50
Junction box, for FD50xxM



TKH Security WMF50
Wall mount, for FD50xxM



TKH Security JBF50
Junction box, for FE5012



TKH Security WMF50
Wall mount, for FE5012