

WMFD50

Wall mount, for FD50xxM

DESCRIPTION

The WMFD50 is the wall mount for the FD50xxM fixed dome cameras from the 5000-series cameras.

FEATURES

Aluminum alloy material with surface spray treatment

Wall mounting bracket

Can be combined with the junction box





Description

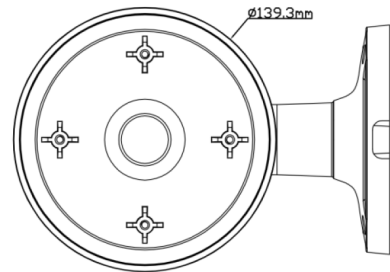
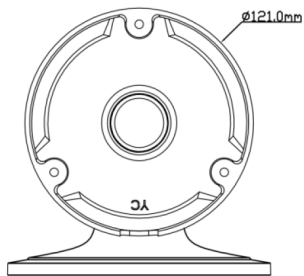
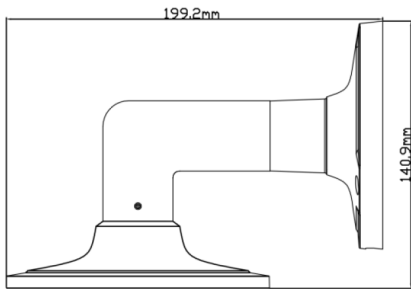
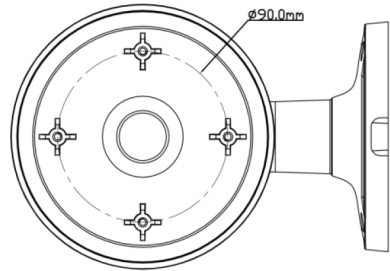
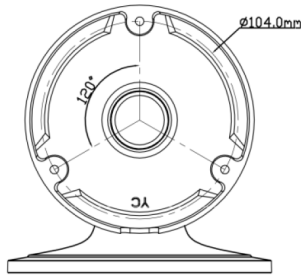
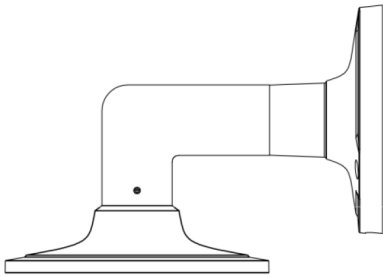
(c) 20260210

Mechanical

Material	Aluminum alloy
Color	RAL 9003 (signal white)
Dimensions (H x W x D)	199 x 139.3 x 140.9 mm
Weight	0.560 kg
Load Bearing	The wall must be strong enough to withstand at least 3 times the weight of the complete camera assembly
Working Temperature	-40 .. +60 °C (-40 .. +140 °F)
Working Humidity	10 .. 90 % RH

Ordering Information

WMFD50	Wall mount, for FD50xxM
--------	-------------------------



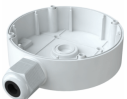
RELATED



TKH Security FD5006M
6MP IP Fixed dome camera with 5x motor zoom, IR, 1/2.5"



TKH Security FD5008M
4K IP Fixed dome color camera with 4x motor zoom, 1/1.8" CMOS



TKH Security Jbfd50
Junction box, for FD50xxM



TKH Security PM50
Pole mount, for BL50xxM, FD50xxM, FE5012



TKH Security WM50
Corner mount, for FD50xxM, FE5012
