

WMPD50

Wall mount, for PD5004x

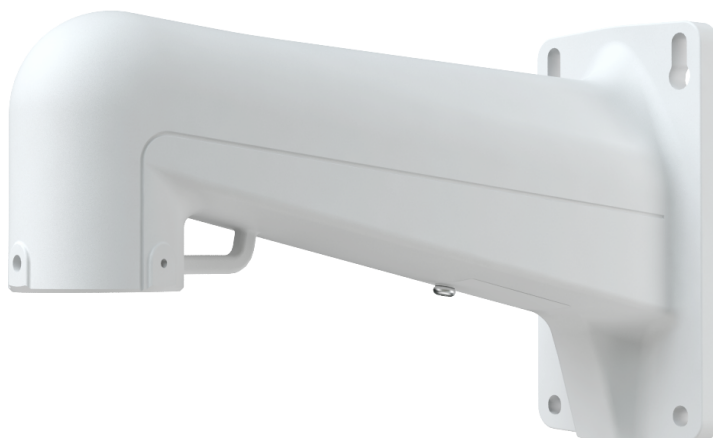
DESCRIPTION

*** Planned release October 1, 2025 ***

The WMPD50 is the wall mount for the PD5004x cameras from the 5000-series cameras.

FEATURES

Aluminum alloy material with surface spray treatment



Description

(c) 20250821

Mechanical

Material	Aluminum alloy
Color	RAL 9003 (signal white)
Dimensions (H x W x D)	
Weight	
Load Bearing	The wall must be strong enough to withstand at least 3 times the weight of the complete camera assembly
Working Temperature	-40 .. +60 °C (-40 .. +140 °F)
Working Humidity	10 .. 90 % RH

Ordering Information

WMPD50	Wall mount, for PD5004x
--------	-------------------------

RELATED



TKH Security PD5004
4MP IP Pendant PTZ camera with 40x motor zoom, IR, 1/1.8" CMOS



TKH Security PD5004W
4MP IP Pendant PTZ camera with 40x motor zoom, IR, Wiper, 1/1.8" CMOS



TKH Security PBD500
Mounting plate for PD5004x



TKH Security WMPD51
Corner mount, for PD5004x